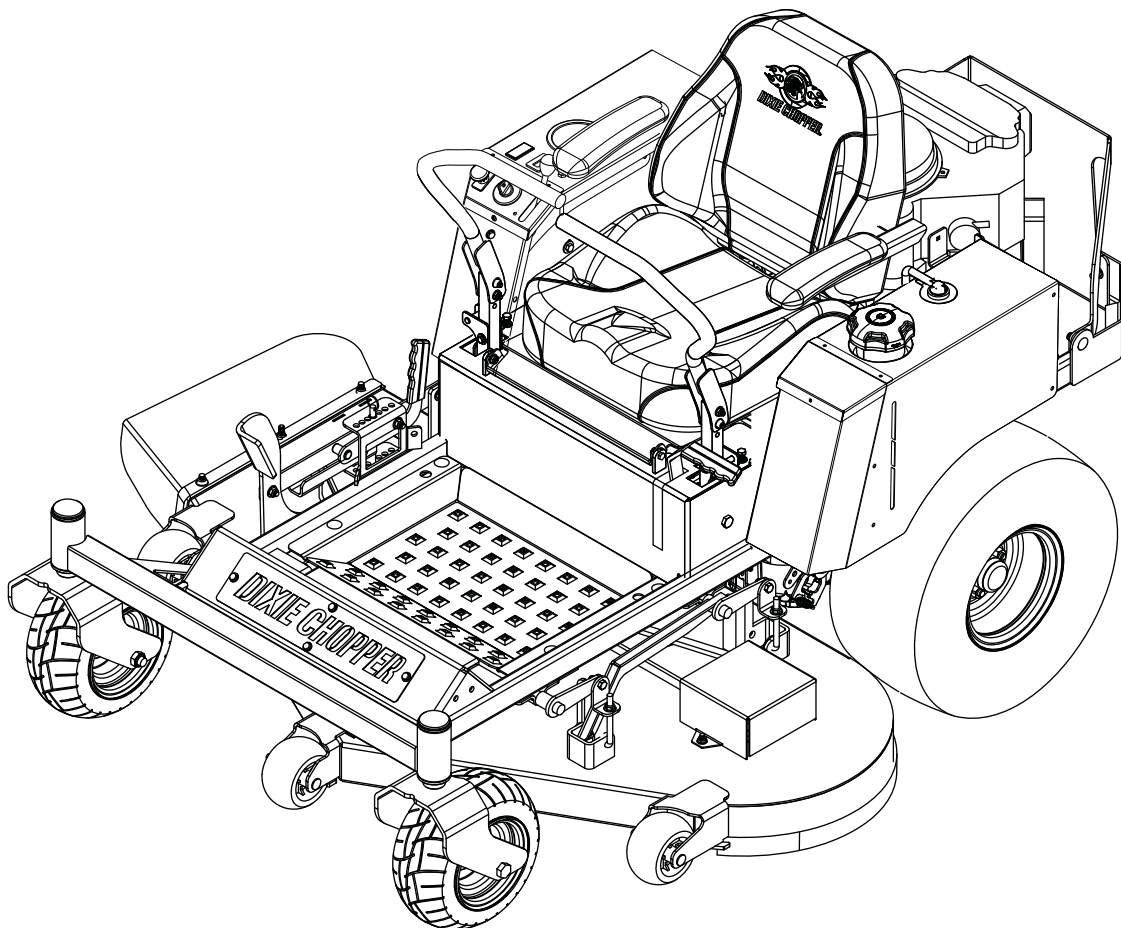




2018 Zee 2 Parts Manual



About This Manual

Congratulations on the purchase of your new Dixie Chopper mower! When operated and maintained as directed, Dixie Chopper is confident that this mower will provide you with years of excellent performance, durability, and trouble free service.

Should you ever have any questions regarding the operation, maintenance, or safety of your mower, please contact your authorized Dixie Chopper dealer who has been specially trained in the operation and service of Dixie Chopper mowers.

Please take time to record the information about your new Dixie Chopper mower in the space below for future reference. Such information may be needed when you contact your authorized Dixie Chopper dealer with questions.

Your Dixie Chopper dealer is the best source for genuine parts and accessories to keep your mower running and cutting its best. The replacement parts found within this manual are available through all authorized dealers.

Illustrations and photographs used in this manual were current as of date of print. Despite this effort, production changes may have occurred after the time of the purchase of your Dixie Chopper; therefore, your unit may vary slightly from what is depicted in this manual.

All information, illustrations, and specifications contained in this manual were in effect at the time of publication. Dixie Chopper reserves the right to change, modify, and/or discontinue specifications and/or design without notice. If there is a change that has been made to your mower which is not shown or reflected in this manual, please see your authorized Dixie Chopper dealer before operating and/or servicing equipment.

Authorized Dealer:

Model #: _____ Engine Model #: _____

Serial #: _____ Engine Serial #: _____

Date purchased: _____

Table of Contents

<i>Topic</i>	<i>Page#</i>
Quick Reference.....	1-3
Belt Routing.....	4
Decals.....	5-6
Frame.....	7-8
Drive System.....	9-10
Rolling Chassis.....	11-12
42" Deck.....	13-14
48" Deck.....	15-16
54" Deck.....	17-18
Spindle and Deck Belts.....	19-20
Kohler Engine.....	21-22
Kawasaki Engine.....	23-24
Briggs Engine.....	25-26
Steering and Brake.....	27-28
Inner Fender.....	29-30
Body and Control Panel.....	31-32
Body Cont.....	33-34
Fuel Hose Routing (49 State).....	35
Fuel Hose Routing (CA Model).....	36
Wiring Diagram.....	37
Electrical Schematic.....	38
General Bolt Torque Specifications.....	39

Quick Reference

Zee 2 (Kohler Engine)	2342KO	2342KO-CA	2348KO	2348KO-CA	2354KO	2354KO-CA
Spark Plug	901600					
Pre-Filter (Air)	N/A					
Air Filter Primary	903005					
Fuel Filter	903004					
Oil Filter	901186					
Engine Oil	902619					
Drive System Oil	903245					
Drive System Filter	901153					
Drive System Belt	200572					
Fan	902555					
LH Transaxle Replacement	200539					
RH Transaxle Replacement	200538					
Blade Standard X (Factory Equipped)	301067		301068		301069	
Blade Twist	N/A					
Spindle Drive Belt	300996		300995		300997	
Anti-Scalp Roller (Center, Left, Right)	300365					
Discharge Chute	300797		300837		301047	
O.C.D.C. Complete	(Optional) 301428		(Optional) 301429		(Optional) 301430	
Complete Spindle Assembly	300630					
Seat	401963					
Fuel Cap	400885					
Charcoal Canister	N/A	4221120	N/A	4221120	N/A	4221120
Throttle Cable Assembly	401590					
Choke Cable Assembly	600072					
Front Tire Assembly	Tire - 400957 Rim - 400956 Assembly 400872					
Rear Tire Assembly	Tire - 400959 Rim - 400958 Assembly 400930		Tire - 400867 Rim - 400868 Assembly 400296			

Quick Reference

Zee 2 (Kawasaki Engine)	2348	2348_CA	2354	2354-CA
Spark Plug	902453			
Pre-Filter (Air)	N/A			
Air Filter Primary	11013-0752 (Obtain from Kawasaki Dealer)			
Fuel Filter	49019-0014 (Obtain from Kawasaki Dealer)			
Oil Filter	49065-7007 (Obtain from Kawasaki Dealer)			
Engine Oil	902873			
Drive System Oil	902868			
Drive System Filter	901153			
Drive System Belt	200572			
Fan	902555			
LH Transaxle Replacement	200539			
RH Transaxle Replacement	200538			
Blade Standard X (Factory Equipped)	301068		301069	
Blade Twist	N/A			
Spindle Drive Belt	300995		300997	
Anti-Scalp Roller (Center, Left, Right)	300365			
Discharge Chute	300837		301047	
O.C.D.C. Complete	(Optional) 301429		(Optional) 301430	
Complete Spindle Assembly	300630			
Seat	401963			
Fuel Cap	400885			
Charcoal Canister	N/A	4221120	N/A	4221120
Throttle Cable Assembly	401590			
Choke Cable Assembly	600072			
Front Tire Assembly	Tire - 400957 Rim - 400956 Assembly 400872			
Rear Tire Assembly	Tire - 400867 Rim - 400868 Assembly 400296			

Quick Reference

Zee 2 (Briggs & Stratton Engine)	2348BR	2348BR_CA	2354BR	2354BR-CA
Spark Plug	900735			
Pre-Filter (Air)	902994			
Air Filter Primary	902891			
Fuel Filter	902893			
Oil Filter	902506			
Engine Oil	902873			
Drive System Oil	902868			
Drive System Filter	901153			
Drive System Belt	200572			
Fan	902555			
LH Transaxle Replacement	200539			
RH Transaxle Replacement	200538			
Blade Standard X (Factory Equipped)	301068		301069	
Blade Twist	N/A			
Spindle Drive Belt	300995		300997	
Anti-Scalp Roller (Center, Left, Right)	300365			
Discharge Chute	300837		301047	
O.C.D.C. Complete	(Optional) 301429		(Optional) 301430	
Complete Spindle Assembly	300630			
Seat	401963			
Fuel Cap	400885			
Charcoal Canister	N/A	4221120	N/A	4221120
Throttle Cable Assembly	401590			
Choke Cable Assembly	600072			
Front Tire Assembly	Tire - DUP-400338 Rim - 400956 Assembly DUP-400438			
Rear Tire Assembly	Tire - 400867 Rim - 400868 Assembly 400296			

Belt Routing

REAR

BELTS 42"

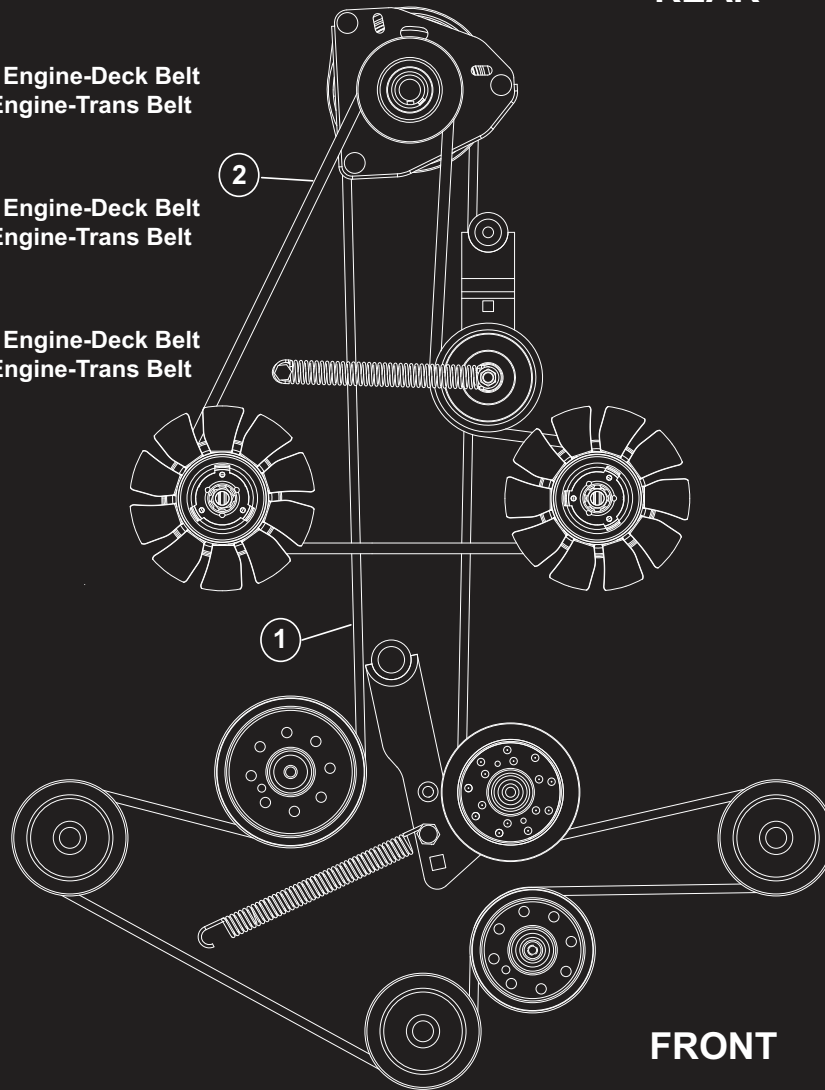
- 1.) 300996 - 133 B Engine-Deck Belt
- 2.) 200572 - 64 A Engine-Trans Belt

BELTS 48"

- 1.) 300995 - 146 B Engine-Deck Belt
- 2.) 200572 - 64 A Engine-Trans Belt

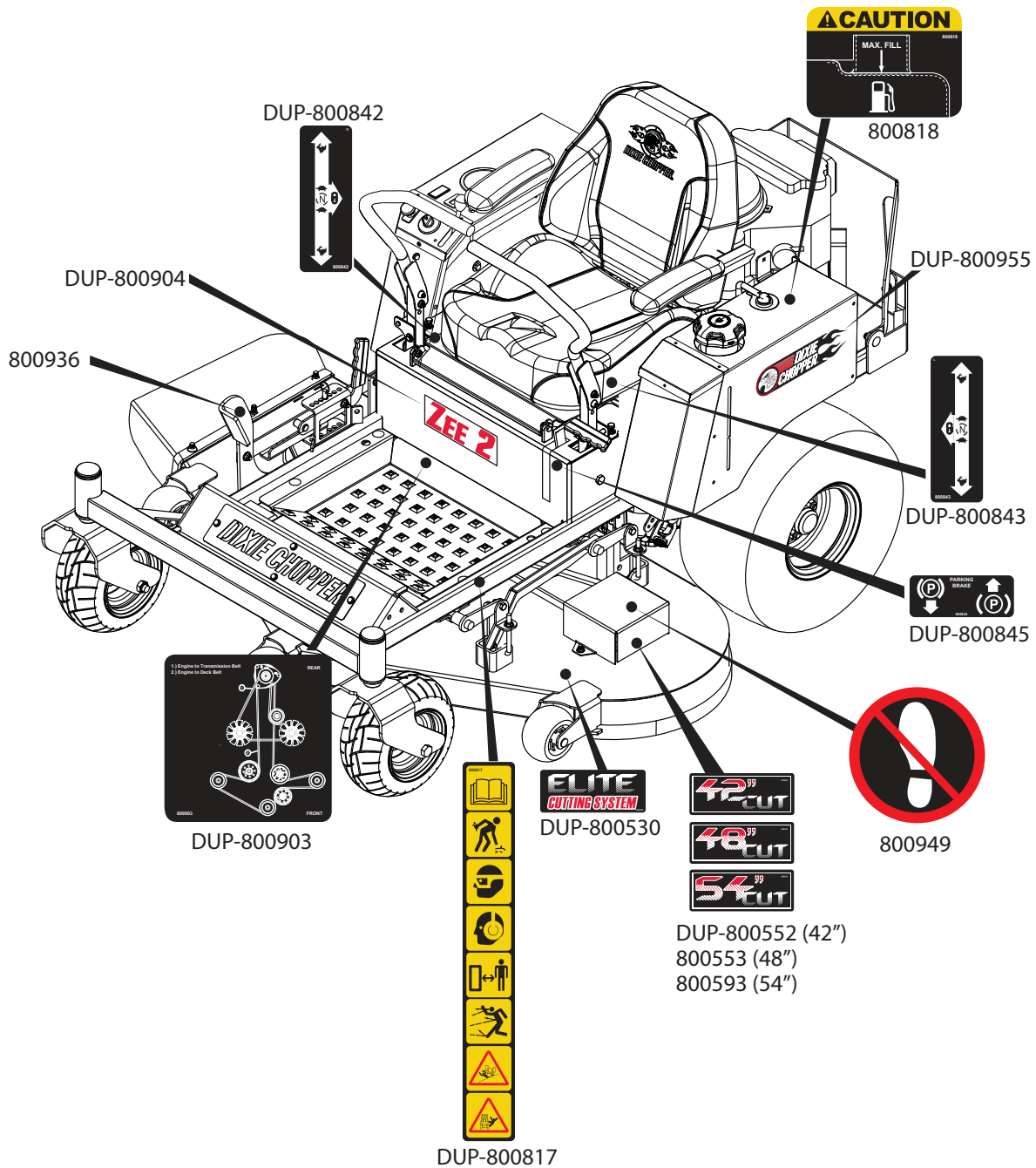
BELTS 54"

- 1.) 300997 - 159 B Engine-Deck Belt
- 2.) 200572 - 64 A Engine-Trans Belt



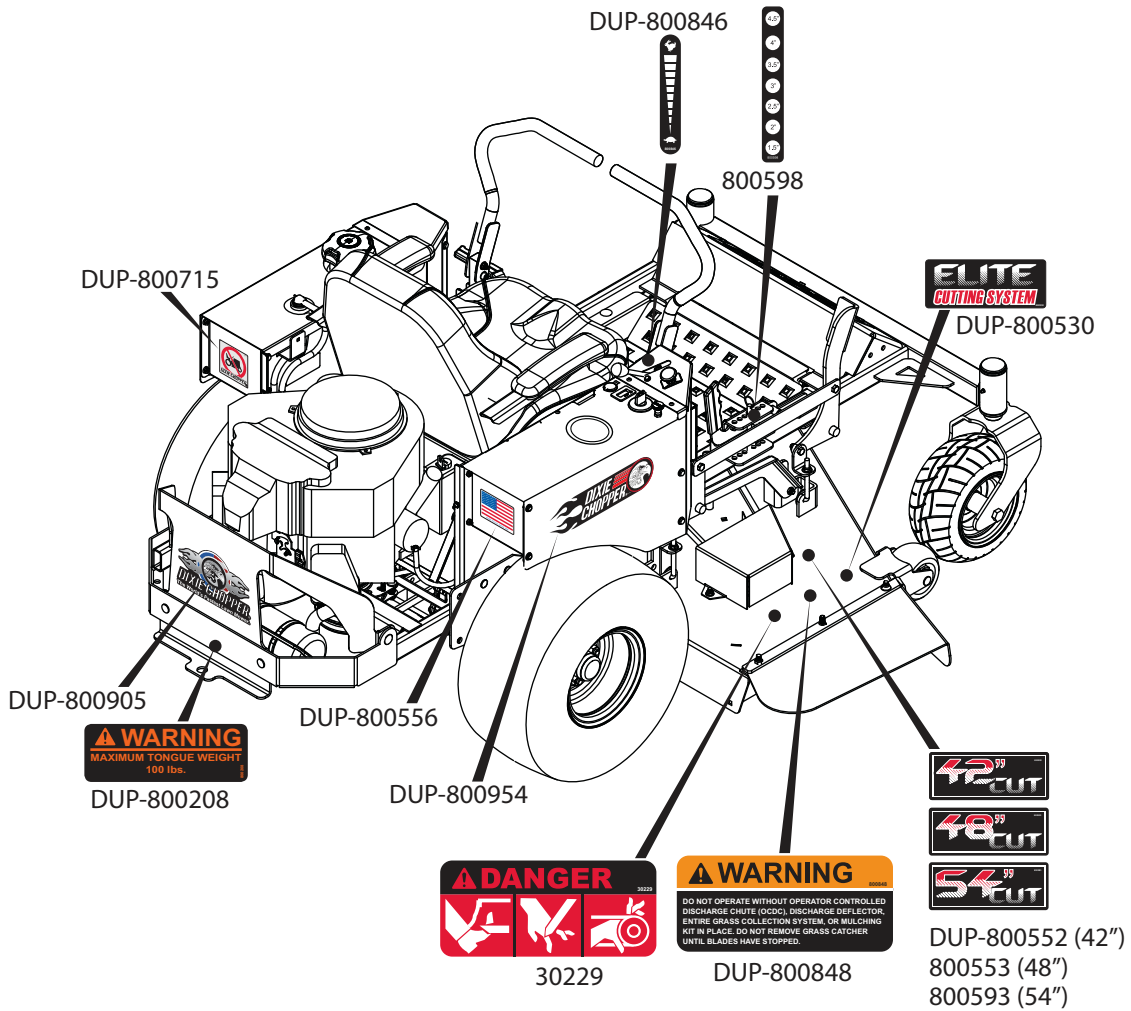
FRONT

Decals

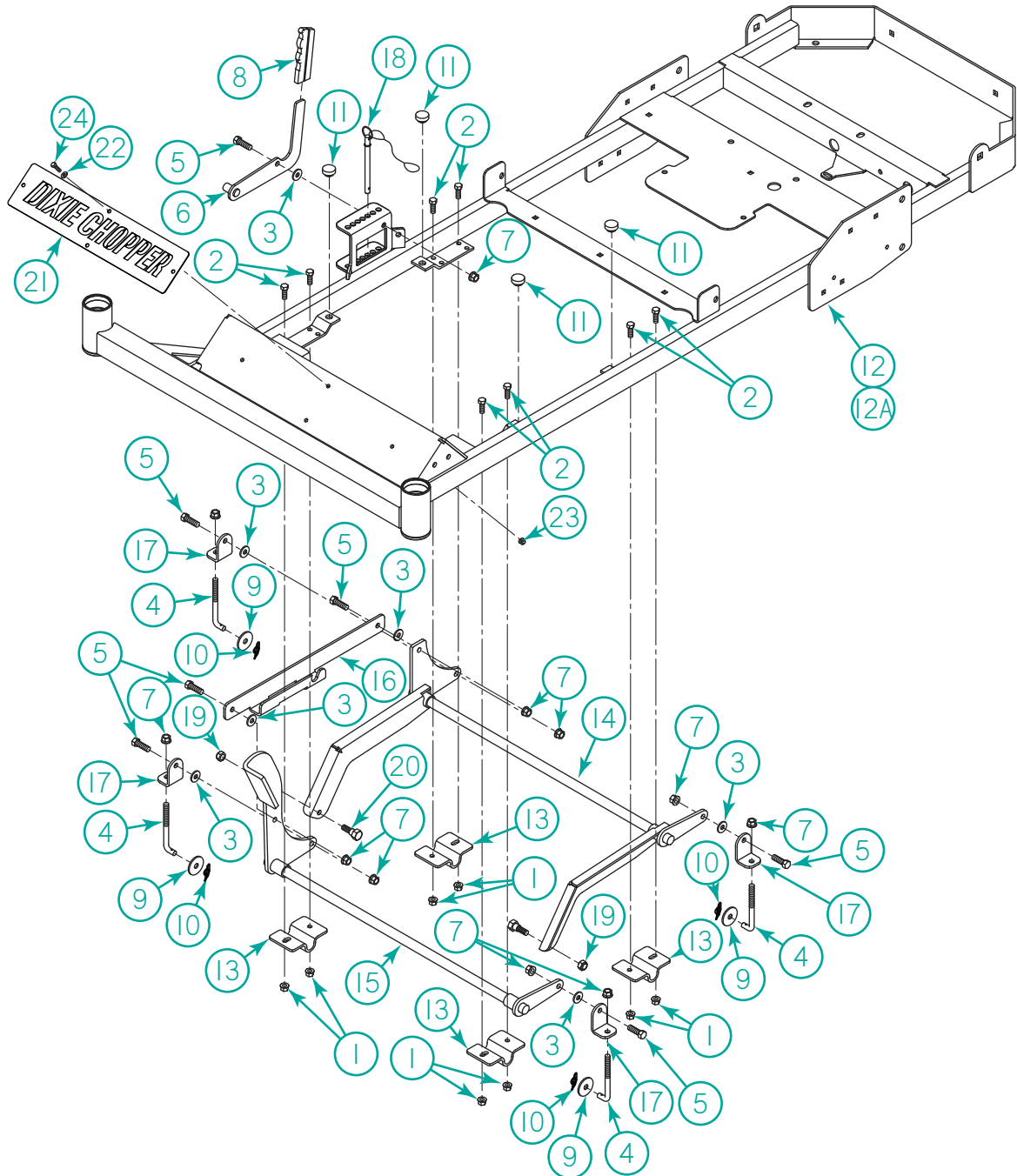


Part No.	Description
800901	Decal Kit
DUP-800552	Decal, 42" Cut
800553	Decal, 48" Cut
800593	Decal, 54" Cut
DUP-800904	Decal, Front Pan Zee 2
800936	Decal, Foot Pedal Grip

Decals



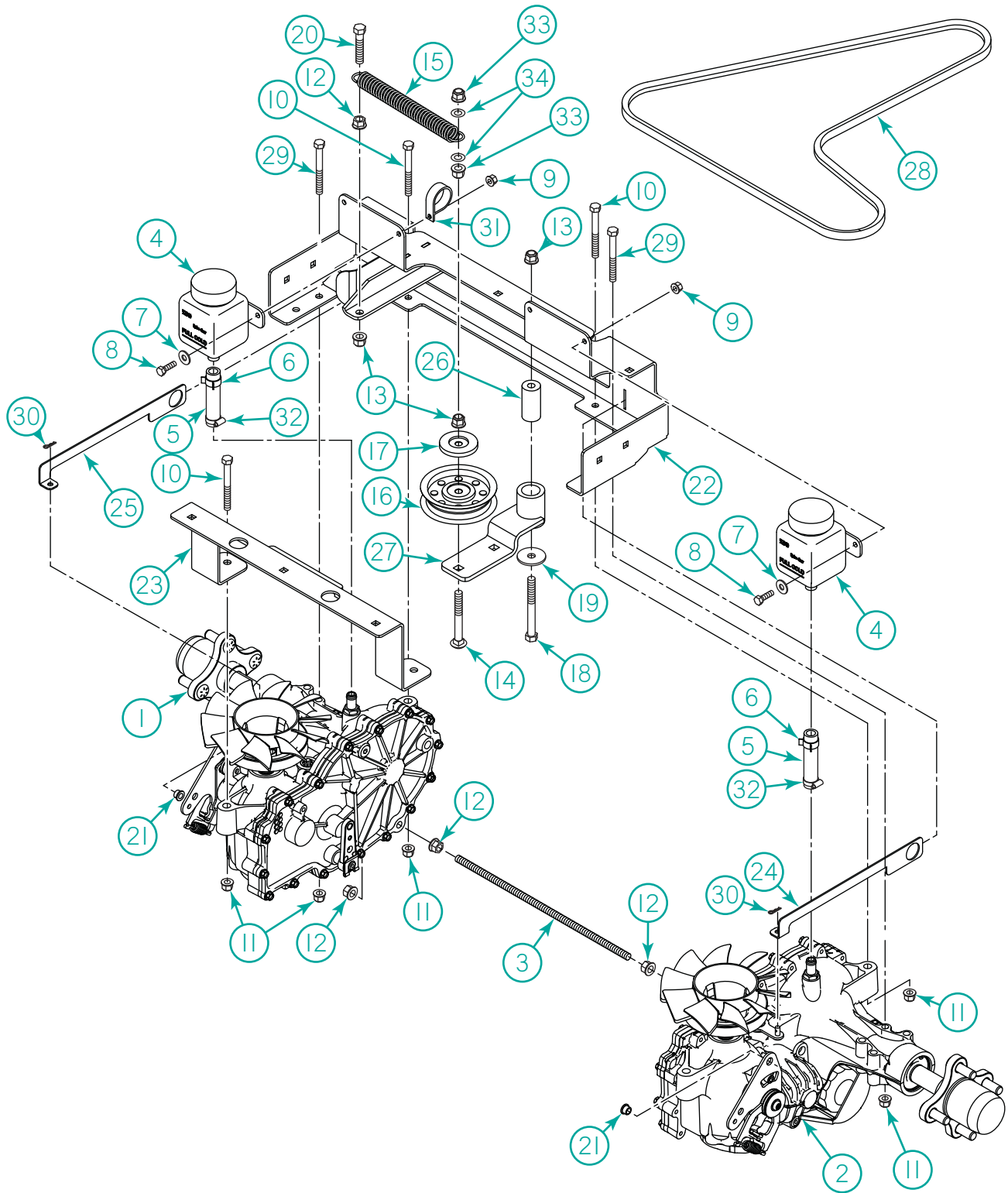
Frame



Frame

Item	Part No.	Description	Qty.
1	N-217	Nut, 5/16-18 Flange Nyloc Gr. A Clear Zinc	8
2	B-313	Bolt, 5-16/18 x 7/8" HHCS FT Gr.5 Clear Zinc	8
3	W-125	Washer, 3/8 x 7/8 Nylon	7
4	300502	Hanger, Deck 3/8-16 x 4-3/8" 90 degree	4
5	B-108	Bolt, 3/8-16 x 1" HHCS ft gr.5 Zinc	5
6	67258	Grip, Black	1
7	N-216	Nut, 3/8-16 Flange Nyloc Gr. A Clear Zinc	11
8	DUP-301690	Weldment, Deck Lock Handle, Clear Zinc	1
9	W-106	washer - 3/8 Fender (Thick)	4
10	C-134	Clip, 3/8" Shaft Locking Hairpin, Clear Zinc	4
11	900068	Pad, Rubber	4
12	101041.25	Weld, Frame 42 Black	1
12A	101043.25	Weld, Frame 48-54 Black	1
13	DUP-101002	Bracket, Strap Clear Zinc	4
14	101001	Weld, Lift Deck Rear Black	1
15	DUP-101000	weld, Lift Deck Front Black	1
16	301692	Bracket, Arm Height Deck, Clear Zinc	1
17	302164	Bracket, Deck Lift Pivot Angle	4
18	902629	Pin, Quick Release w/Lanyard (P-148 & 902628)	1
19	N-112	Nut, 3/8-16 Nyloc Jam	2
20	B-364	Bolt, 1/2 x 3/8 x 3/8-16 x 5/8" HHCS Shoulder	2
21	401982	Plate, Dixie Chopper Cutout	1
22	W-153	Washer, 1/4 Stainless Steel Flat	4
23	N-219	Nut, 1/4-20 Flange Nyloc Gr. A Clear Zinc	4
24	B-209	Bolt, 1/4-20 x 3/4" SS	4

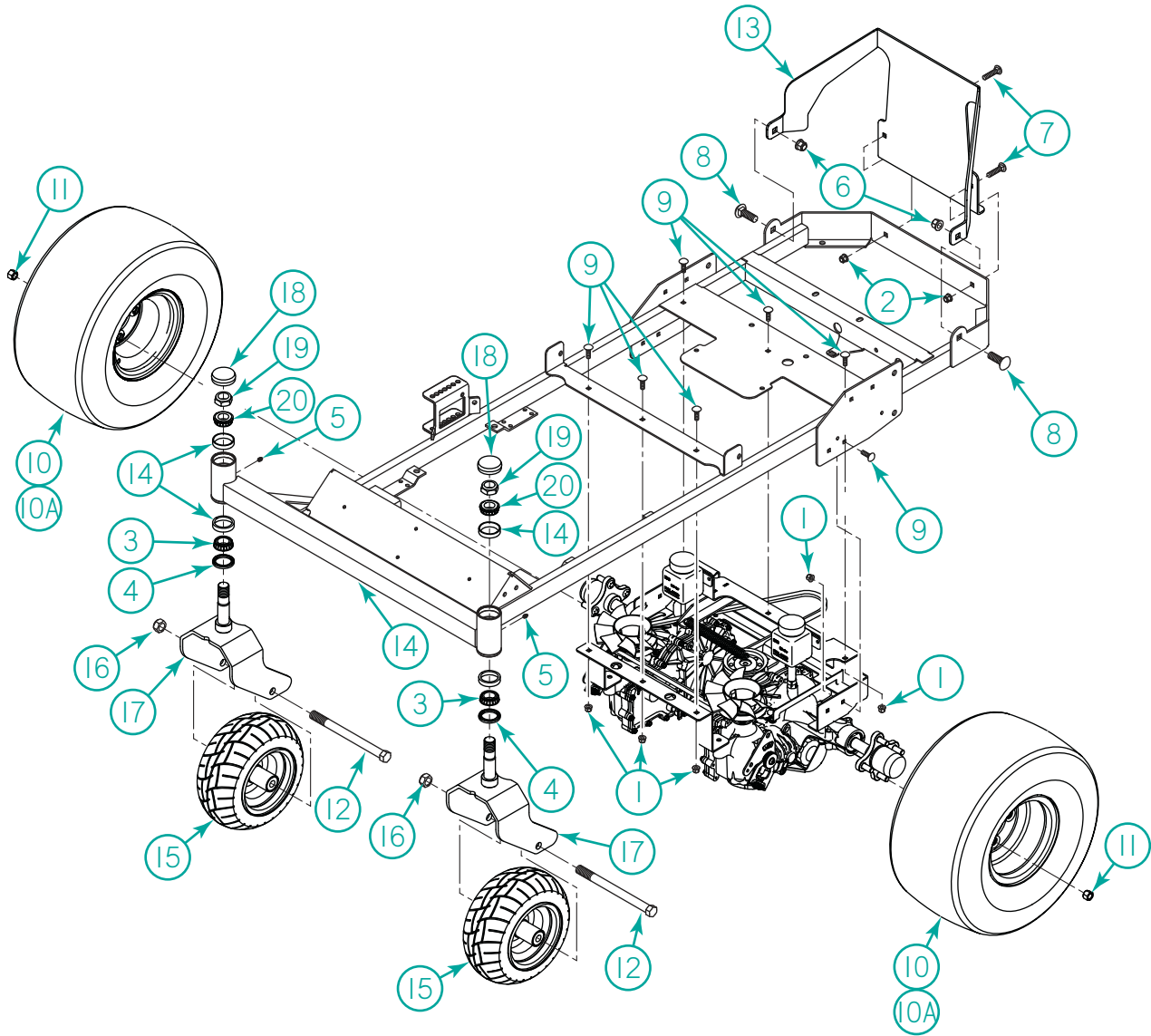
Drive System



Drive System

Item	Part No.	Description	Qty.
1	201030	Transaxle, RH-ZT-2800	1
2	201029	Transaxle, LH-ZT-2800	1
3	S-137	Stud, 3/8-16 x 13"	1
4	200566	Tank, Hydraulic Overflow Single Transaxle	2
5	600030	Hose, 1/2" ID x 3/4" OD Fuel Line/Inches	2
6	C-118	Clamp, UM5013-131 1/2" Spring Clamp	2
7	W-102	washer, 1/4 Flat	4
8	B-172	Bolt, 1/4-20 x 1" HHCS FT Gr.5 Zinc	4
9	N-219	Nut, 1/4-20 Flange Nyloc Gr. A Clear Zinc	4
10	B-173	Bolt, 5/16-18 x 2-1/2" HHCS PT Gr.5 Zinc	4
11	N-217	Nut, 5/16-18 Flange Nyloc Gr. A Clear Zinc	8
12	N-108	Nut, 3/8-16 Whizlock Flange	5
13	N-216	Nut, 3/8-16 Flange Nyloc Gr. A Clear Zinc	3
14	B-261	Bolt, 3/8-16 x 2-1/2" Carriage Bolt Gr.5 Zinc	1
15	200545	Spring, Transaxle Idler	1
16	300633	Pulley, Flat Idler 3.5" with Insert	1
17	300868	Cap, Pulley Bearing Cover	1
18	B-140	Bolt, 3/8-16 x 3" Carriage Bolt Gr.5 Zinc	1
19	W-106	Washer, 3/8 Fender (Thick)	1
20	B-124	Bolt, 3/8-16 x 1-3/4" HHCS GR.5	1
21	400595	Bushing, Plastic 5/16 ID x 7/16 OD x 5/16" L	2
22	200557	Asm, Rear Trans Mount Black	1
23	200561	Bracket, Front Trans Mount Z-2 Black	1
24	200563	Bracket, Trans Dump Left Z-2 Silver	1
25	200562	Bracket, Trans Dump Right Z-2 Silver	1
26	301001	Tube, 13/32 ID x 1" OD x 2-1/32" L Plated	1
27	200570.52	Weld, Trans Idler Arm Black	1
28	200572	Belt, Traction Drive	1
29	B-176	Bolt, 5/16-18 x 3" HHCS PT Gr.5 Zinc	4
30	20224	Clip-#13 Hair Pin	2
31	C-113	Clamp, 1" Rubber Coated	2
32	97098	Clamp - 1/2" Clamp f/Twin	2
33	N-112	Nut, 3/8-16 Nyloc Jam Gr.A Clear Zinc	2
34	W-123	Washer, 3/8 x 3/4 x .06 Flat Machine, Clear Zinc	2

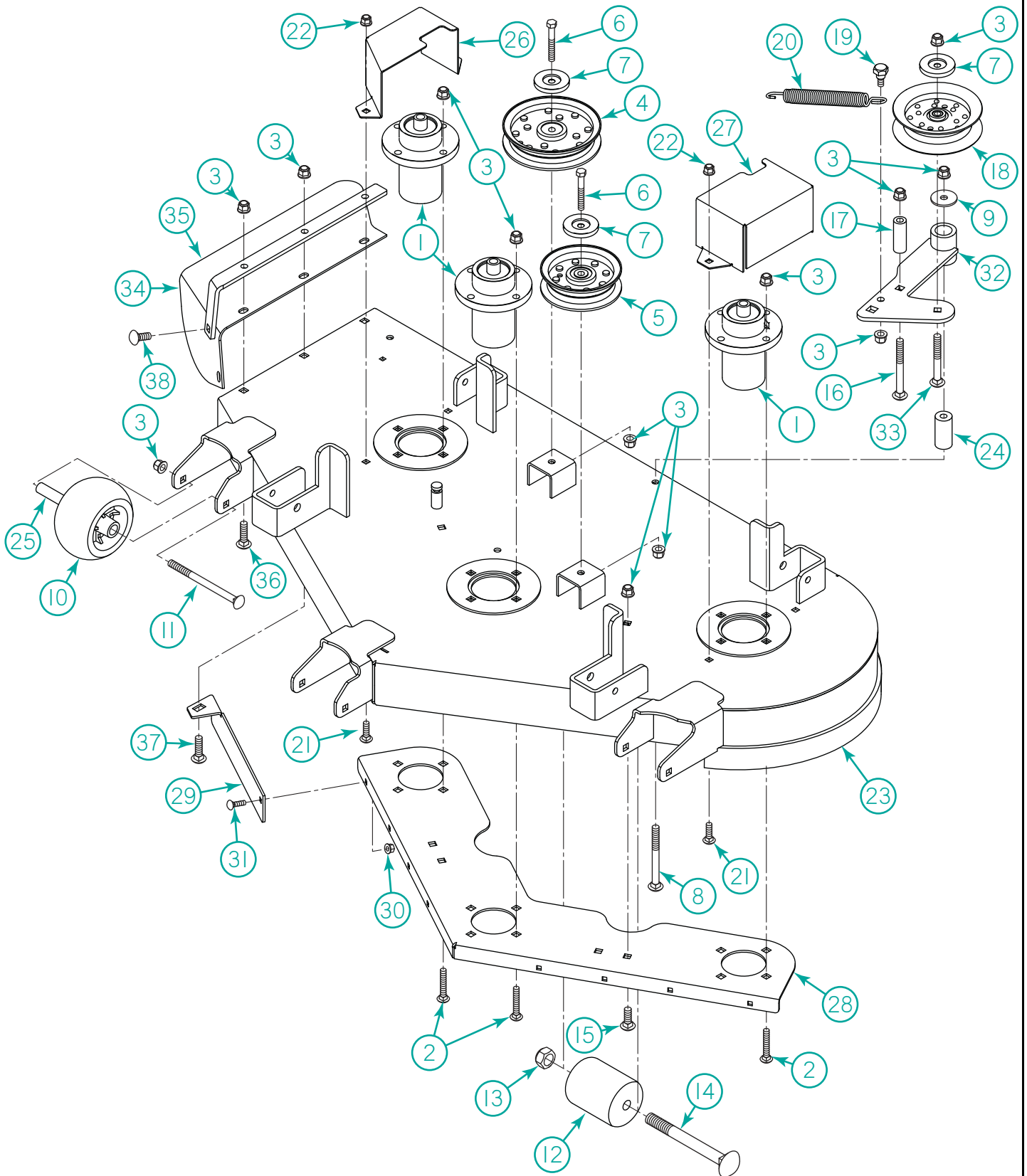
Rolling Chassis



Rolling Chassis

Item	Part No.	Description	Qty.
1	N-217	Nut, 5/16-18 Flange Nyloc Gr. A Clear Zinc	10
2	N-216	Nut, 3/8-16 Flange Nyloc Gr. A Clear Zinc	2
3	97171	Bearing, Bottom Fork 1-1/16" L44649	2
4	10208	Seal, Front Fork	2
5	F-100	Fitting, 3/16 Drive-In Grease	2
6	N-218	Nut, 1/2-13 Whizlock Flange Nylon Insert	2
7	B-135	Bolt, 3/8-16 x 1" Carriage FT Gr.5 Zinc	2
8	B-353	Bolt, 1/2-13 x 1-1/4" Carriage	1
9	B-104	Bolt, 5/16-18 x 3/4" Carriage	10
10	400930	Assembly, Complete Rear Wheel 20x8-10, Turf Tread (42")	2
10A	DUP-400296	Assembly, Complete Rear Wheel 20x10-8, Turf Tread (48" and 54")	2
11	N-113	Nut, 1/2-20 Wheel Lug	8
12	B-122	Bolt, 5/8-11 x 7-1/2" HHCS PT Gr.5 Zinc	2
13	401932	Bracket, Guard Engine Zee-2 Black	1
14	10206	Bearing, Race Front Fork	4
15	DUP-400438	Wheel, 13 x 6.5-6	2
16	N-156	Nut, 5/8-11 Nyloc Jam	2
17	101016	Weldment, Fork Black	2
18	401410	Cap, Front Fork Dust	2
19	N-183	Nut, 1-14 Nylock Jam	2
20	10207	Bearing, Upper Front Fork	2

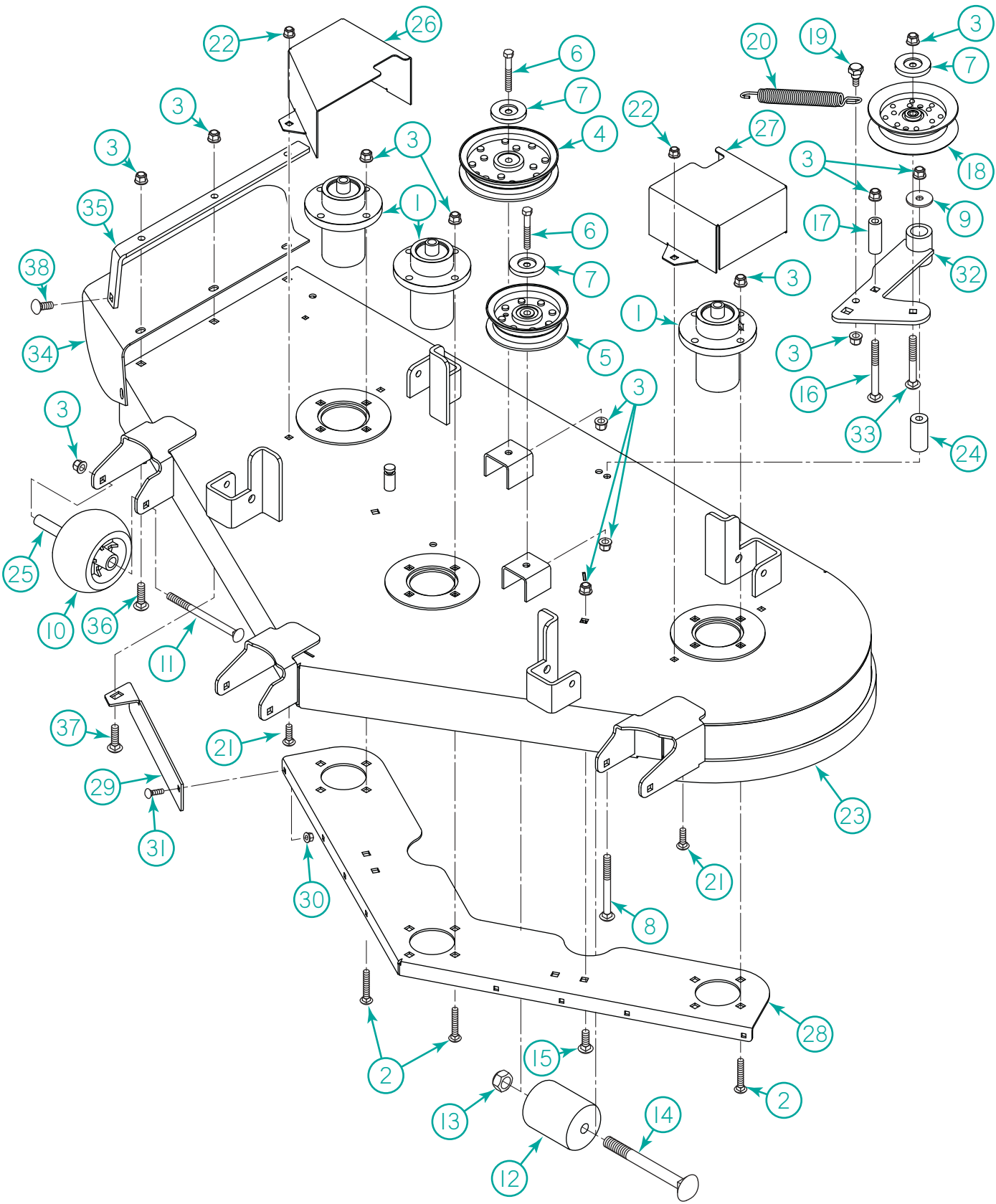
42" Deck



42" Deck

Item	Part No.	Description	Qty.
1	300630	Assembly, Spindle	3
2	B-190	Bolt, 3/8-16 x 1-1/2" Carriage FT Gr.5 Zinc	12
3	N-216	Nut, 3/8-16 Flange Nyloc Gr. A Clear Zinc	26
4	300829	Pulley, Flat Idler 5" with Insert	1
5	300833	Pulley, Flat Idler 4" with Insert	1
6	B-165	Bolt, 3/8-16 x 2" HHCS PT Gr.5 Zinc	2
7	300868	Cap, Pulley Bearing Cover	3
8	B-365	Bolt, 3/8-16 x 3-1/4" Carriage FT Gr.5 Zinc	1
9	W-106	Washer, 3/8 Fender (Thick)	1
10	300365	Roller, 5 x 2-3/4 x 5/8" ID Anti-Scalp	3
11	B-374	Bolt, 3/8-16 x 4-1/2" Carriage FT Gr.5 Zinc	3
12	67240	Roller, 3-3/4"L Nylon Deck	1
13	N-156	Nut, 5/8-11 Nyloc Jam	1
14	B-278	Bolt, 5/8-11 x 5" Carriage PT Gr.5 Zinc	1
15	B-110	Bolt, 3/8-16 x 3/4" Carriage	2
16	B-337	Bolt, 3/8-16 x 3" Carriage FT Gr.5 Zinc	1
17	300999	Bushing, Belt Guide Black	1
18	300981	Pulley, 4.00" Flat Idler Deep Deck	1
19	B-364	Bolt, 1/2 x 3/8 x 3/8-16 x 5/8" HHCS Shoulder	1
20	301003	Spring, Deck Idler	1
21	B-104	Bolt, 5/16-18 x 3/4" Carriage	4
22	N-217	Nut, 5/16-18 Flange Nyloc Gr. A Clear Zinc	4
23	300930	Weld, Deck Sheel Black	1
24	301001	Tube, 13/32 ID x 1" OD x 2-1/32" L Plated	1
25	300892	Bushing, Gauge Wheel Spacer	3
26	302636	Bracket, pulley Guard RH Black with No Step Decal	1
27	302637	Bracket, Pulley Guard LH Black with No Step Decal	1
28	301087	Bracket, Reinforcement Deck 42"	1
29	301084	Plate, Baffle Discharge 48/42"	1
30	N-102	Nut, 1/4-20 Whizlock Flange	1
31	B-304	Bolt, 1/4-20 x 3/4" Carriage	1
32	300908	Weld, Idler Arm Black	1
33	B-261	Bolt, 3/8-16 x 2-1/2" Carriage FT Gr.5 Zinc	1
34	300797	Chute, Discharge	1
35	300799	Strap, Discharge Chute	1
36	B-135	Bolt, 3/8-16 x 1" Carriage FT Gr. 5 Zinc	2
37	B-136	Bolt, 3/8-16 x 1-1/4" Carriage FT Gr. 5 Zinc	1
38	B-137	Bolt, 3/8-16 x 3/4" Carriage FT Gr. 5 Zinc	1

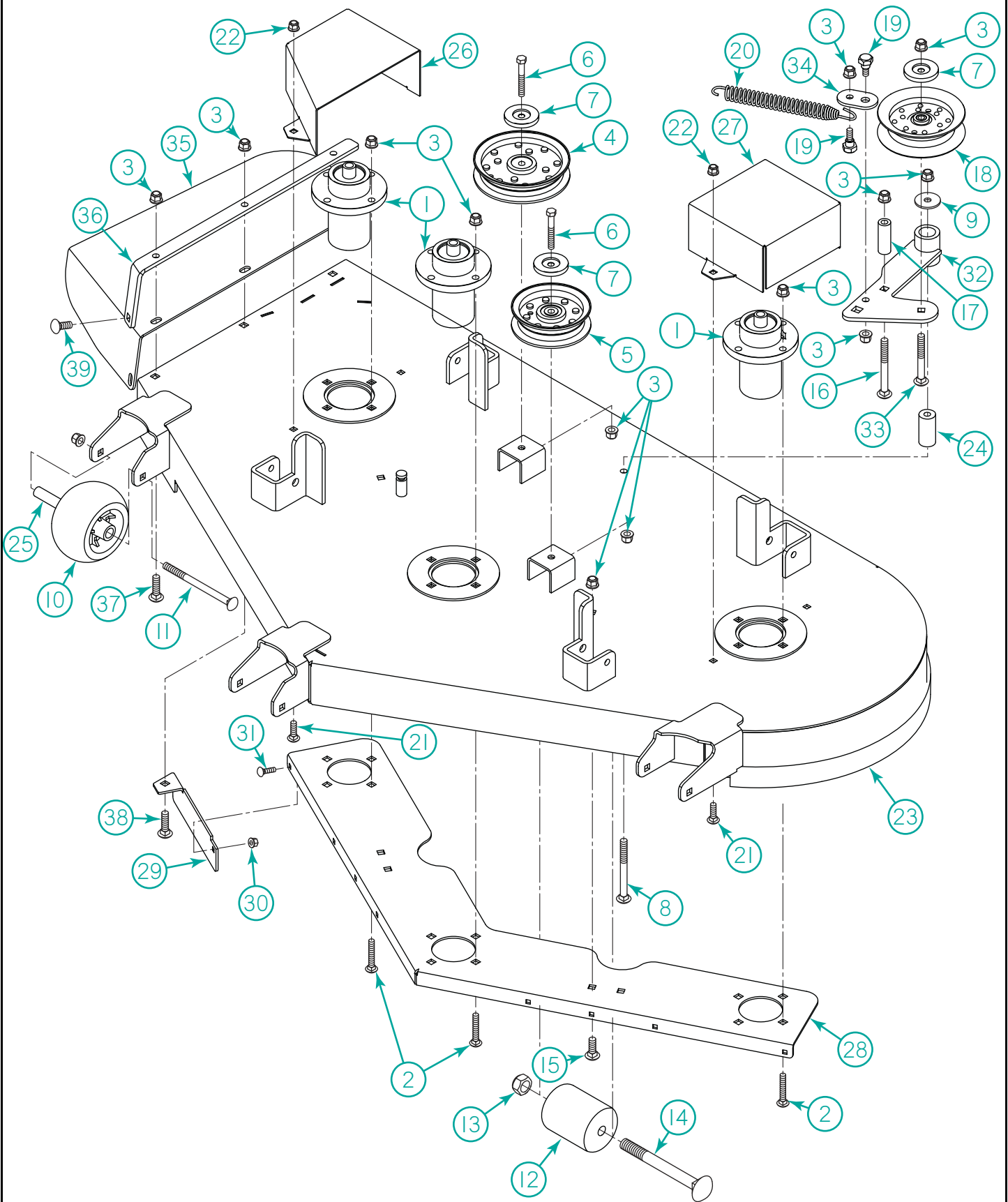
48" Deck



48" Deck

Item	Part No.	Description	Qty.
1	300630	Assembly, Spindle	3
2	B-190	Bolt, 3/8-16 x 1-1/2" Carriage FT Gr.5 Zinc	12
3	N-216	Nut, 3/8-16 Flange Nyloc Gr. A Clear Zinc	24
4	300829	Pulley, Flat Idler 5" with Insert	1
5	300833	Pulley, Flat Idler 4" with Insert	1
6	B-165	Bolt, 3/8-16 x 2" HHCS PT Gr.5 Zinc	2
7	300868	Cap, Pulley Bearing Cover	3
8	B-365	Bolt, 3/8-16 x 3-1/4" Carriage FT Gr.5 Zinc	1
9	W-106	Washer, 3/8 Fender (Thick)	1
10	300365	Roller, 5 x 2-3/4 x 5/8" ID Anti-Scalp	3
11	B-374	Bolt, 3/8-16 x 4-1/2" Carriage FT Gr.5 Zinc	3
12	67240	Roller, 3-3/4"L Nylon Deck	1
13	N-156	Nut, 5/8-11 Nyloc Jam	1
14	B-278	Bolt, 5/8-11 x 5" Carriage PT Gr.5 Zinc	1
15	B-110	Bolt, 3/8-16 x 3/4" Carriage	2
16	B-337	Bolt, 3/8-16 x 3" Carriage FT Gr.5 Zinc	1
17	300999	Bushing, Belt Guide Black	1
18	300981	Pulley, 4.00" Flat Idler Deep Deck	1
19	B-364	Bolt, 1/2 x 3/8 x 3/8-16 x 5/8" HHCS Shoulder	1
20	301003	Spring, Extension	1
21	B-104	Bolt, 5/16-18 x 3/4" Carriage	4
22	N-217	Nut, 5/16-18 Flange Nyloc Gr. A Clear Zinc	4
23	300933	Weld, Deck Sheel Black	1
24	301001	Tube, 13/32 ID x 1" OD x 2-1/32" L Plated	1
25	300892	Bushing, Gauge Wheel Spacer	3
26	302626	Bracket, pulley Guard RH Black with No Step Decal	1
27	302635	Bracket, Pulley Guard LH Black with No Step Decal	1
28	301086	Bracket, Reinforcement Deck 48"	1
29	301084	Plate, Baffle Discharge 48/42"	1
30	N-102	Nut, 1/4-20 Whizlock Flange	1
31	B-304	Bolt, 1/4-20 x 3/4" Carriage	1
32	300908	Weld, Idler Arm Black	1
33	B-261	Bolt, 3/8-16 x 2-1/2" Carriage FT Gr.5 Zinc	1
34	300837	Chute, Discharge	1
35	300839	Strap, Discharge Chute	1
36	B-135	Bolt, 3/8-16 x 1" Carriage FT Gr. 5 Zinc	4
37	B-136	Bolt, 3/8-16 x 1-1/4" Carriage FT Gr. 5 Zinc	1
38	B-137	Bolt, 3/8-16 x 3/4" Carriage FT Gr. 5 Zinc	1

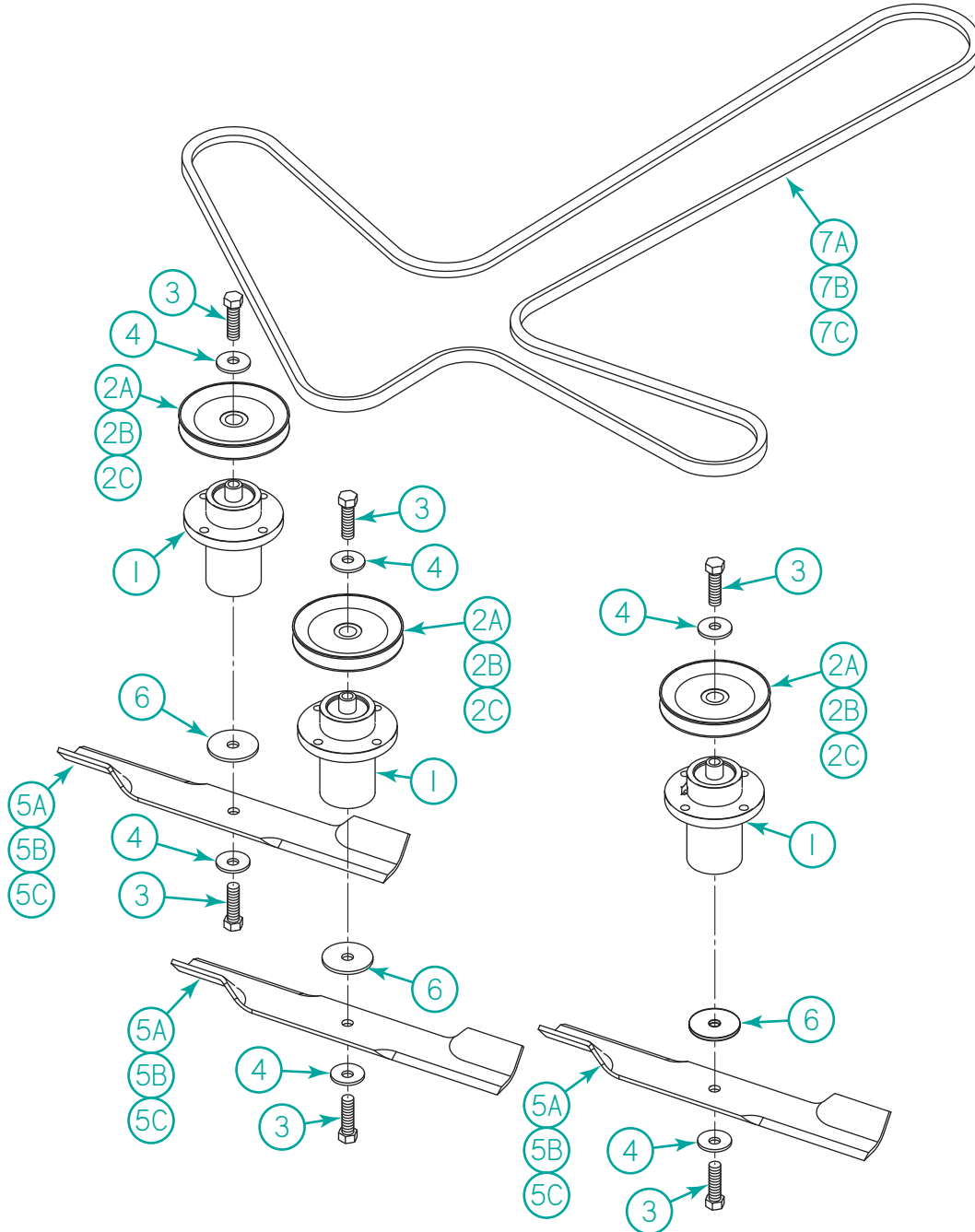
54" Deck



54" Deck

Item	Part No.	Description	Qty.
1	300630	Assembly, Spindle	3
2	B-190	Bolt, 3/8-16 x 1-1/2" Carriage FT Gr.5 Zinc	12
3	N-216	Nut, 3/8-16 Flange Nyloc Gr. A Clear Zinc	21
4	300829	Pulley, Flat Idler 5" with Insert	1
5	300833	Pulley, Flat Idler 4" with Insert	1
6	B-165	Bolt, 3/8-16 x 2" HHCS PT Gr.5 Zinc	2
7	300868	Cap, Pulley Bearing Cover	3
8	B-365	Bolt, 3/8-16 x 3-1/4" Carriage FT Gr.5 Zinc	1
9	W-106	Washer, 3/8 Fender (Thick)	1
10	300365	Roller, 5 x 2-3/4 x 5/8" ID Anti-Scalp	3
11	B-374	Bolt, 3/8-16 x 4-1/2" Carriage FT Gr.5 Zinc	3
12	67240	Roller, 3-3/4"L Nylon Deck	1
13	N-156	Nut, 5/8-11 Nyloc Jam	1
14	B-278	Bolt, 5/8-11 x 5" Carriage PT Gr.5 Zinc	1
15	B-110	Bolt, 3/8-16 x 3/4" Carriage	2
16	B-337	Bolt, 3/8-16 x 3" Carriage FT Gr.5 Zinc	1
17	300999	Bushing, Belt Guide Black	1
18	300981	Pulley, 4.00" Flat Idler Deep Deck	1
19	B-364	Bolt, 1/2 x 3/8 x 3/8-16 x 5/8" HHCS Shoulder	2
20	300324	Spring, Extension	1
21	B-104	Bolt, 5/16-18 x 3/4" Carriage	4
22	N-217	Nut, 5/16-18 Flange Nyloc Gr. A Clear Zinc	4
23	300955	Weld, Deck Sheel Black	1
24	301001	Tube, 13/32 ID x 1" OD x 2-1/32" L Plated	1
25	300892	Bushing, Gauge Wheel Spacer	3
26	302638	Bracket, Pulley Guard RH Black with No Step Decal	1
27	302639	Bracket, Pulley Guard LH Black with No Step Decal	1
28	301085	Bracket, Reinforcement Deck 54"	1
29	301083	Plate, Baffle Discharge 54"	1
30	N-102	Nut, 1/4-20 Whizlock Flange	1
31	B-304	Bolt, 1/4-20 x 3/4" Carriage	1
32	300908	Weld, Idler Arm Black	1
33	B-261	Bolt, 3/8-16 x 2-1/2" Carriage FT Gr.5 Zinc	1
34	301258	Plate, Spring Extension Clear Zinc	1
35	301047	Chute, Discharge	1
36	301048	Strap, Discharge Chute	1
37	B-135	Bolt, 3/8-16 x 1" Carriage FT Gr. 5 Zinc	4
38	B-136	Bolt, 3/8-16 x 1-1/4" Carriage FT Gr. 5 Zinc	1
39	B-137	Bolt, 3/8-16 x 3/4" Carriage FT Gr. 5 Zinc	1

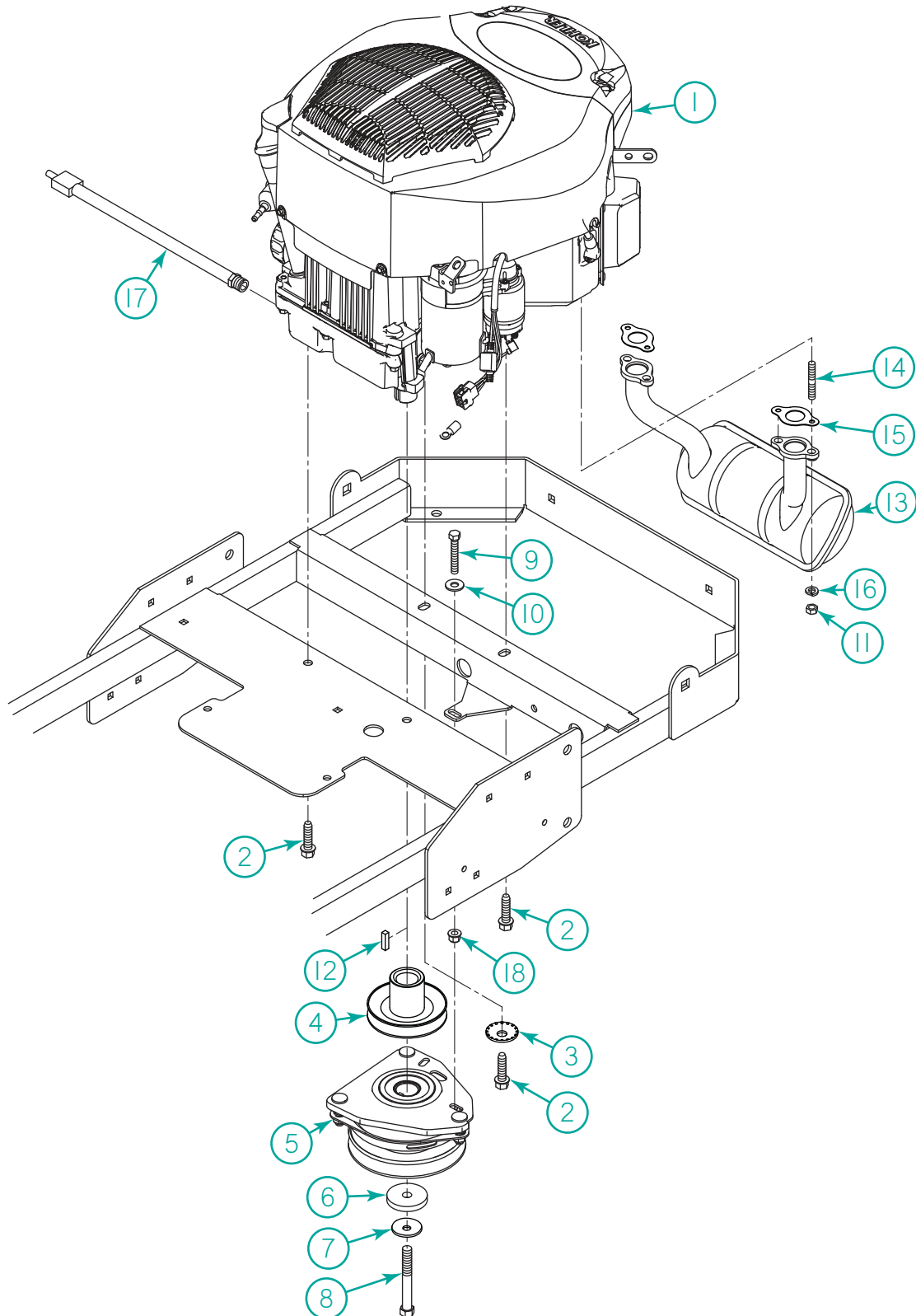
Spindle and Deck Belts



Spindle and Deck Belts

Item	Part No.	Description	Qty.
1	300630	Assembly, Spindle	3
2A	300832	Pulley, Deck 4.30" (42" Model)	3
2B	300818	Pulley, Deck 5.117" (48" Model)	3
2C	300979	Pulley, Deck 5.613" (54" Model)	3
3	W-201	Washer, 1/2 ID x 1-1/2" OD	6
4	B-349	Bolt, 1/2-20 x 1-1/2" HHCS FT Gr.8 Zinc	6
5A	301067	Blade, Deck 42" High Lift	3
5B	301068	Blade, Deck 48" High Lift	3
5C	301069	Blade, Deck 54" High Lift	3
6	300631	Washer, Fiber 1/2 ID x 2-1/4 x 1/8"T	3
7A	300996	Belt, Deck 132.64" A Section Wrapped (42" Model)	1
7B	300995	Belt, Deck 146" B Section Wrapped (48" Model)	1
7C	300997	Belt, Deck 159" B Section Wrapped (54" Model)	1

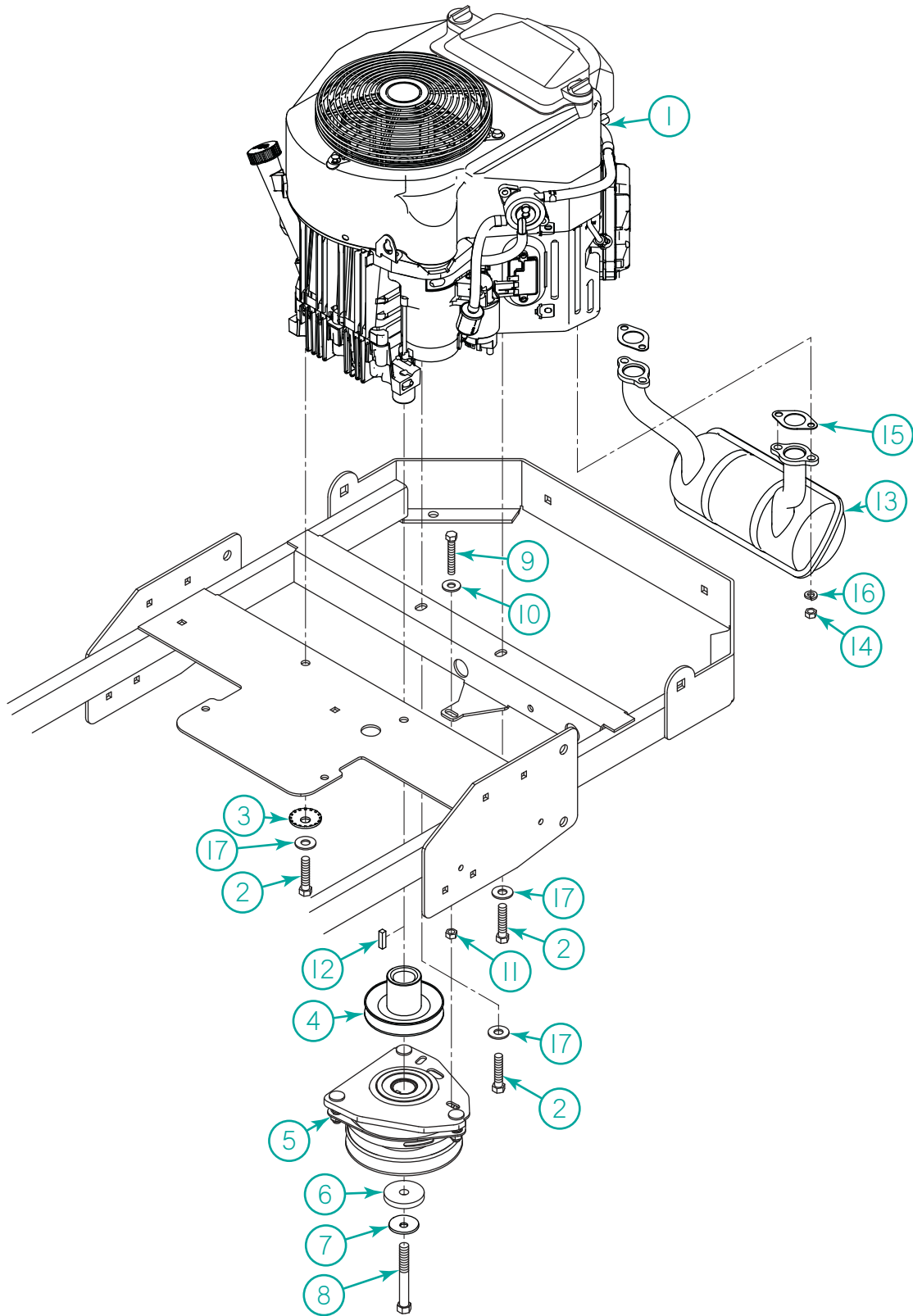
Kohler Engine



Kohler Engine

Item	Part No.	Description	Qty.
1	600567	Engine, Kohler 23 HP	1
2	B-317	Bolt, 3/8-16 x 1-1/4" Self Tapping (Kohler)	4
3	W-158	Washer, 1/2 ID x 1-5/8 OD Tooth Belleville	1
4	301088	Pulley, Engine 4"	1
5	500144	Clutch, Ogura GTIA-EH0IV	1
6	600422	Spacer, .460IDx2.00ODx.25 Th Zinc Plated	1
7	W-144	Washer, 7/16 SS Belleville	1
8	B-216	Bolt, 7/16-20 x 3" HHCS	1
9	B-105	Bolt, 5/16-18 x 1-3/4" HHCS FT Gr.5 Zinc	1
10	W-113	Washer, 5/16 Flat	1
11	N-103	Nut, 5/16-18 Hex	4
12	K-103	Key, 1/4 x 1" Square Key	1
13	600568	Muffler, Kohler	1
14	S-115	Stud, 5/16-18 x 1-3/4"	4
15	901509	Gasket, Exhaust	2
16	W-163	Lockwasher, M8	4
17	600436	Tube, Engine Oil Drain	1
18	N-217	Nut, 5/16-18 Flange Nyloc Gr. A Clear Zinc	1

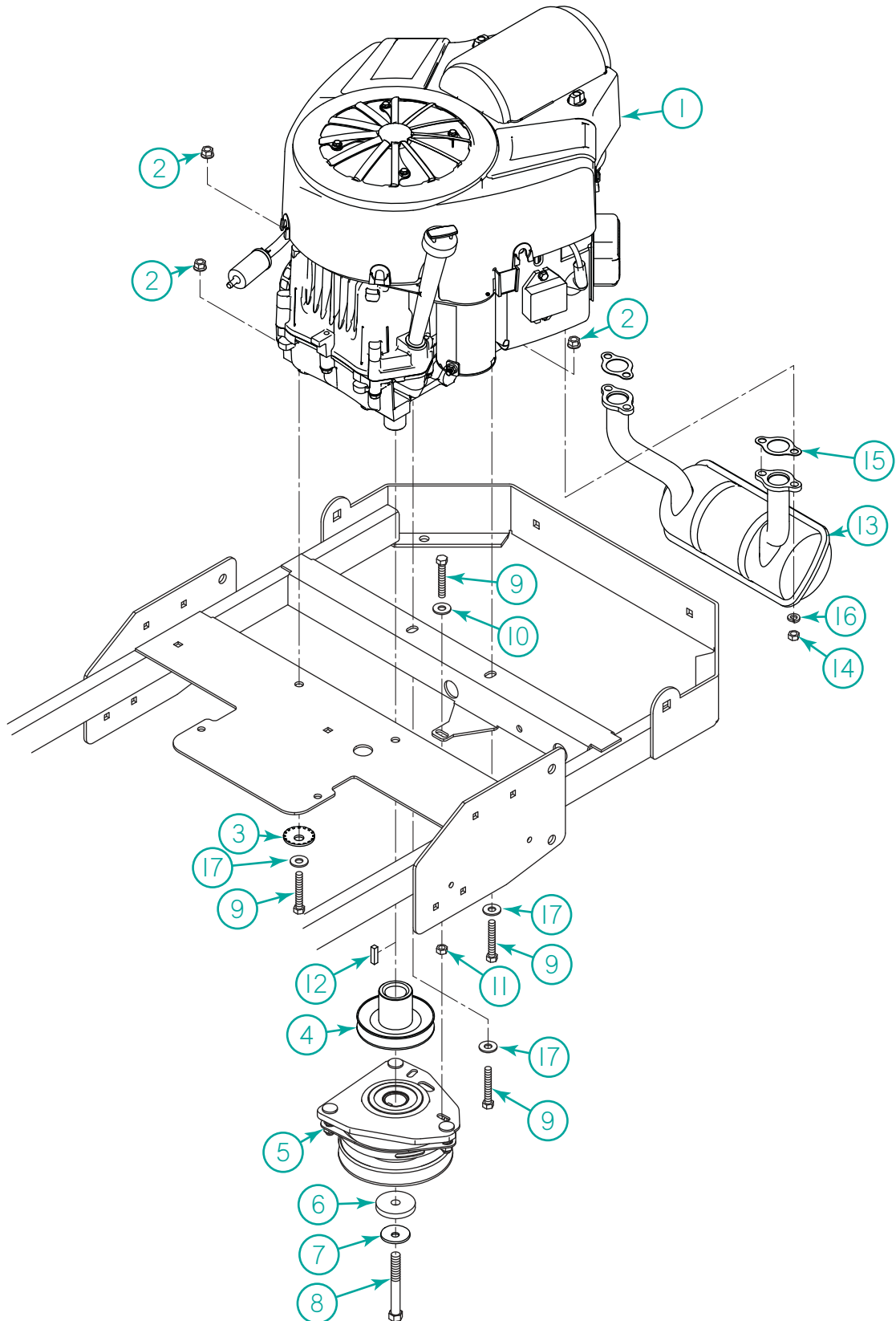
Kawasaki Engine



Kawasaki Engine

Item	Part No.	Description	Qty.
1	600451	Engine, Kawasaki 23 HP (48" & 54")	1
2	B-436	Bolt, 3/8-16 x 1-1/2" HHCS FT Gr.5 Zinc	4
3	W-158	Washer, 1/2 ID x 1-5/8 OD Tooth Belleville	1
4	301088	Pulley, Engine 4"	1
5	500144	Clutch, Ogura GTIA-EH0IV	1
6	600422	Spacer, .460IDx2.00ODx.25 Th Zinc Plated	1
7	W-144	Washer, 7/16 SS Belleville	1
8	B-216	Bolt, 7/16-20 x 3" HHCS	1
9	B-105	Bolt, 5/16-18 x 1-3/4" HHCS FT Gr.5 Zinc	1
10	W-113	Washer, 5/16 Flat	1
11	N-217	Nut, 5/16-18 Flange Nyloc Gr. A Clear Zinc	1
12	K-103	Key, 1/4 x 1" Square Key	1
13	600449	Muffler, Kawasaki	1
14	N-212	Nut, M8-1.25 Hex Gr.5, Clear Zinc	4
15	902038	Gasket, Exhaust	2
16	W-163	Lockwasher, M8	4
17	W-104	Washer, 3/8 Flat	4

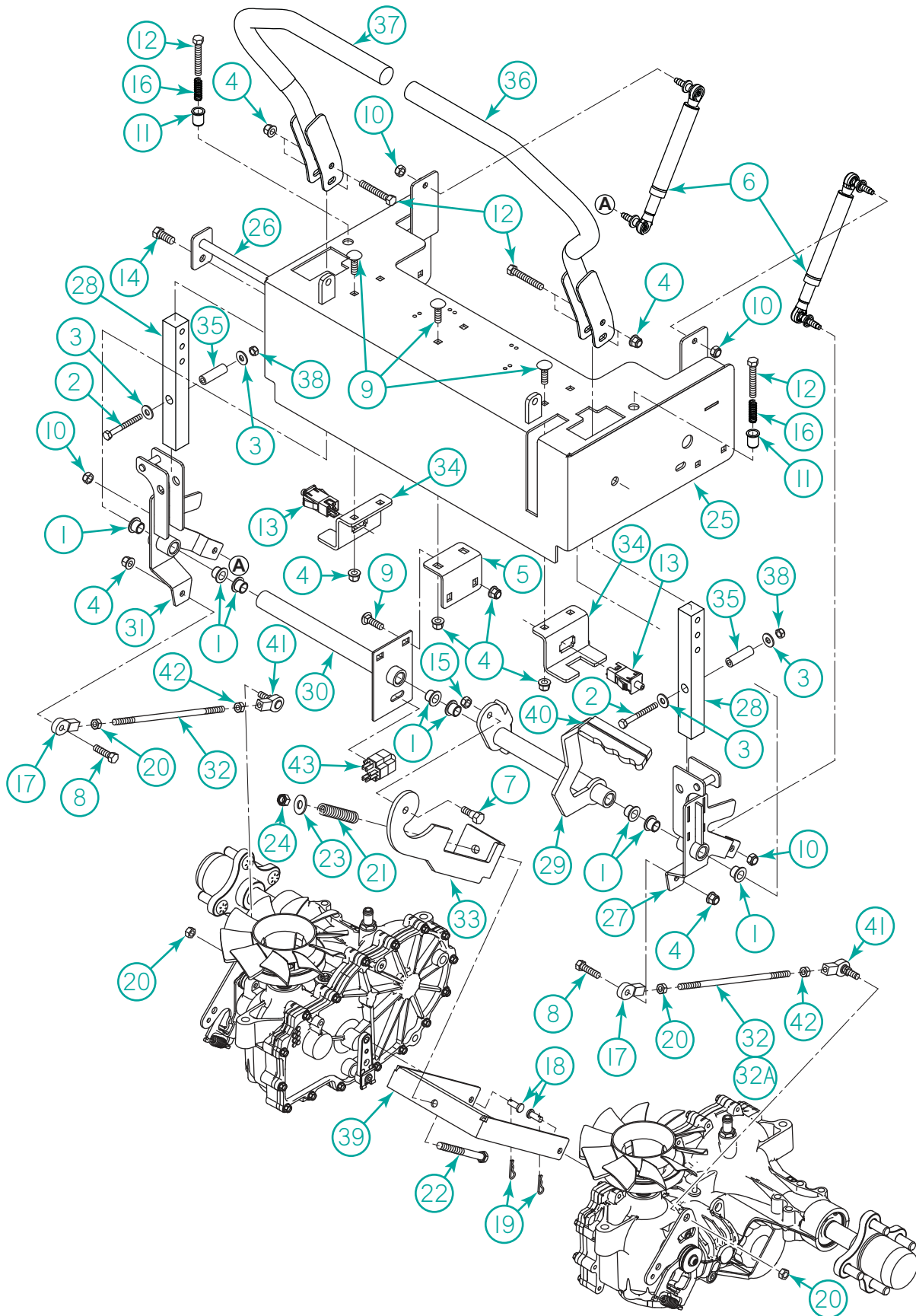
Briggs & Stratton Engine



Briggs & Stratton Engine

Item	Part No.	Description	Qty.
1	DUP-600513	Engine, Briggs 23 HP Commercial Turf	1
2	N-103-W	Nut, 5/16-18 Whizlock Flange	4
3	W-158	Washer, 1/2 ID x 1-5/8 OD Tooth Belleville	1
4	301088	Pulley, Engine 4"	1
5	500144	Clutch, Ogura GTIA-EH0IV	1
6	600422	Spacer, .460IDx2.00ODx.25 Th Zinc Plated	1
7	W-144	Washer, 7/16 SS Belleville	1
8	B-216	Bolt, 7/16-20 x 3" HHCS	1
9	B-105	Bolt, 5/16-18 x 1-3/4" HHCS FT Gr.5 Zinc	5
10	W-113	Washer, 5/16 Flat	1
11	N-217	Nut, 5/16-18 Flange Nyloc Gr. A Clear Zinc	1
12	K-103	Key, 1/4 x 1" Square Key	1
13	600512	Muffler, Briggs	1
14	N-212	Nut, M8-1.25 Hex Gr.5, Clear Zinc	4
15	900774	Gasket, Exhaust	2
16	W-163	Lockwasher, M8	4
17	W-113	Washer, 5/16 Flat	4

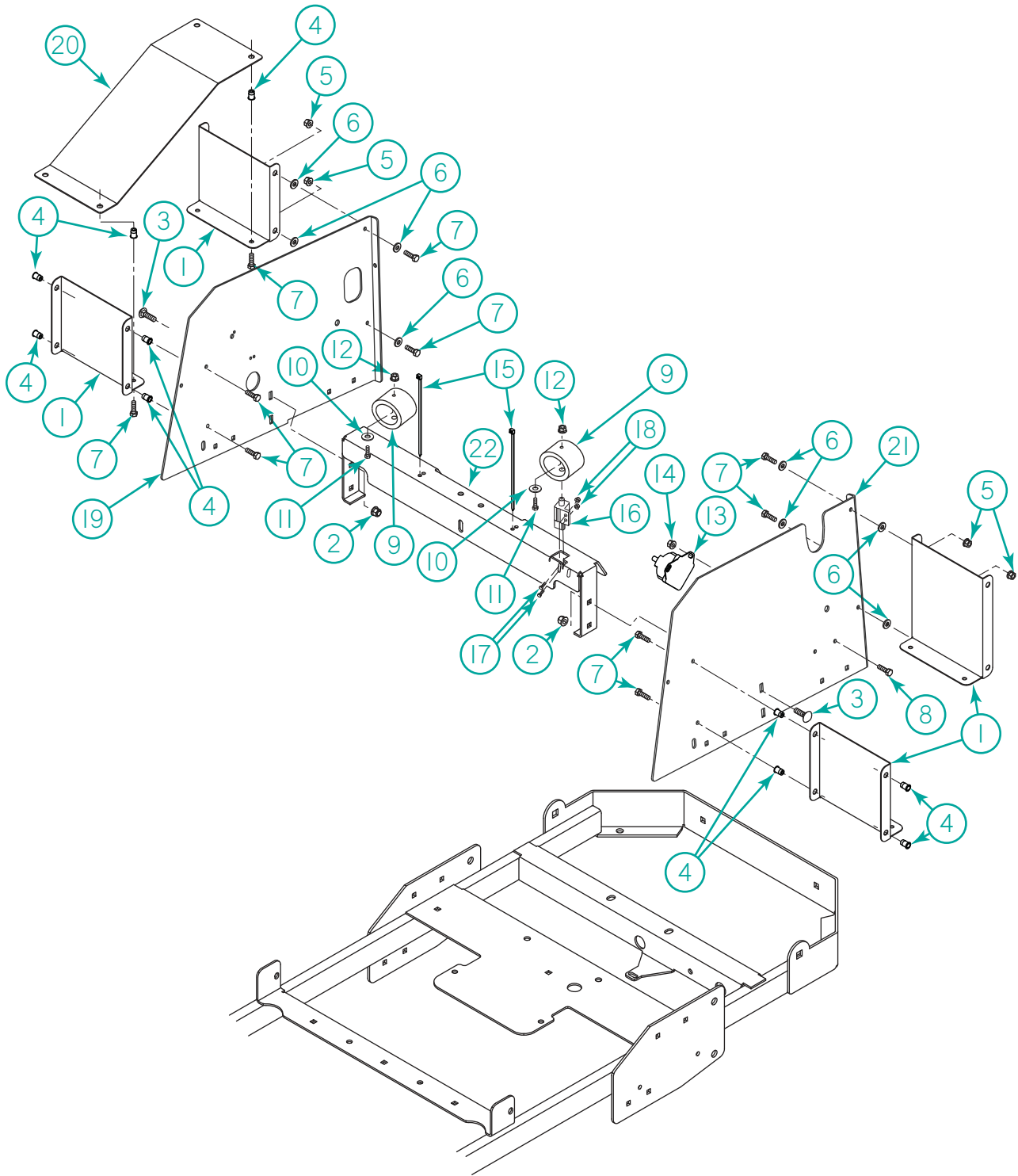
Steering and Brake



Steering and Brake

Item	Part No.	Description	Qty.
1	400671	Bushing, Plastic .500IDx.625ODx.500L	8
2	B-248	Bolt, 1/4-20 x 2" HHCS PT Gr.5 Zinc	2
3	W-102	Washer, 1/4 Flat	4
4	N-217	Nut, 5/16-18 Flange Nyloc Gr. A Clear Zinc	14
5	DUP-401021	Bracket, Support	1
6	DUP-401057	Damper	2
7	B-366	Bolt, 3/8x5/16 x 5/16-18 x 1/2" Shoulder	1
8	B-131	Bolt, 5/16-18 x 1" HHCS Gr.5 Zinc	2
9	B-104	Bolt, 5/16-18 x 3/4" Carriage	8
10	N-215	Nut, M8-1.25 Nylon Insert	4
11	N-153	Nut, 5/16-18 Insert Nut	2
12	B-105	Bolt, 5/16-18 x 1-3/4" HHCS FT Gr.5 Zinc	6
13	500135	Switch, 2 Pole Panel Mount NC NO	2
14	B-137	Bolt, 3/8-16 x 3/4" HHCS FT Gr.5 Zinc	1
15	N-144	Nut, 5/16-18 Nylon Jam	1
16	401114	Spring, Compression 5/16 ID x 2"Long	2
17	200568	Rod-End Spherical 5/16-24 Female Thread	2
18	P-112	Pin, 5/16 x 3/4" Clevis Zinc	2
19	20224	Clip, Hair Pin #13	2
20	N-226	Nut, 5/16-24, Half Jam RH Thread Gr.5 Clear Zinc	4
21	401070	Spring, Parking Brake	1
22	B-128	Bolt, 3/8-16 x 4" HHCS PT Gr. 5	1
23	W-104	Washer, 3/8 Flat	1
24	N-107	Nut, 3/8-16 Nyloc	1
25	DUP-401022	Weld, Front Pan Assembly Black	1
26	DUP-401008	Weld, Steering Flag Plated	1
27	400999	Weld, Steering Bracket LH Black	1
28	400993	Bar, Square Steering Plated	2
29	401010	Weld, Parking Brake Assy, Black	1
30	401016	Weld, Parking Brake Switch, Black	1
31	DUP-401194	Weld, Steering Bracket RH Black	1
32	401937	Assembly, Linkage (incl 17,20,32A,41 &42)	2
32A	401936	Rod, Steering Linkage Yellow Zinc	2
33	DUP-401032	Bracket, Parking Brake Stop Black	1
34	DUP-401098	Bracket, Steering Switch Black	1
35	DUP-401095	Tube, .282ID x .500OD x 1.350L Plated	2
36	DUP-401211	ASM Steering Handle LH (Incl 36A)	1
36A	401052	Grip, Steering Handle Foam	2
37	401902	ASM Steering Handle RH (Incl 36A)	1
38	N-176	Nut, 1/4-20 Nyloc	2
39	401153	Bracket, Parking Brake Black	1
40	67258-R	Grip, 1/4 x 1" Red	1
41	200709	Rod-End Spherical Stud, Female, LH	2
42	N-225	Nut, 5/16-24, Half Jam LH Thread Gr.5 Clear Zinc	2
43	500130	Switch, Brake	1

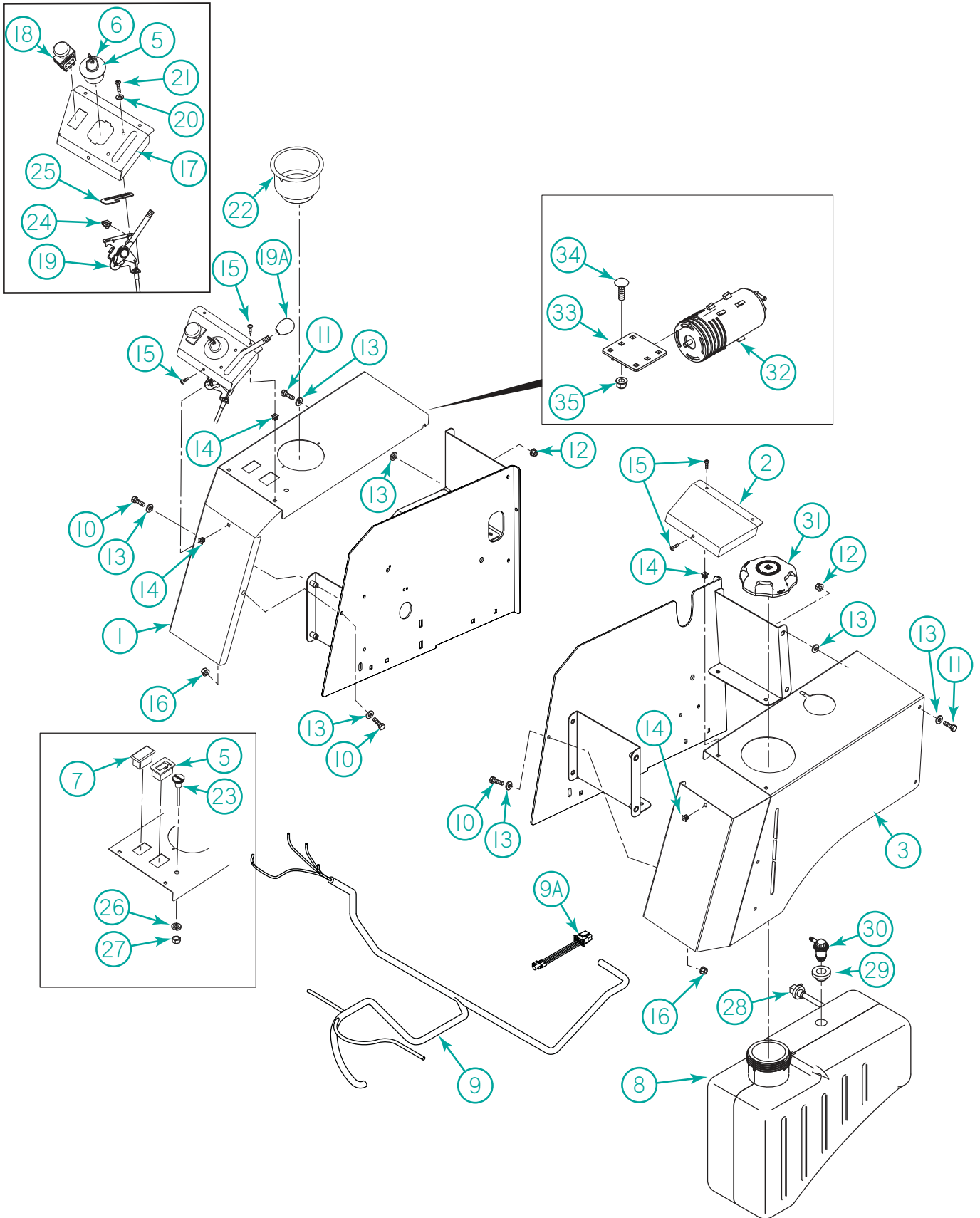
Inner Fender



Inner Fender

Item	Part No.	Description	Qty.
1	400466	Bracket, Fuel Tank 4 Gal Rear Nag	4
2	N-217	Nut, 5/16-18 Flange Nyloc Gr. A Clear Zinc	4
3	B-104	Bolt, 5/16-18 x 3/4" Carriage	4
4	N-152S	Nutsert, 1/4-20 Flange Zinc (.027-.165)	10
5	N-101	Nut, 1/4-20 Whizlock Flange Stainless Steel	4
6	W-153	Washer, 1/4 Stainless Steel Flat	8
7	B-209	Bolt, 1/4-20 x 3/4" HHCS Stainless Steel	12
8	B-102	Bolt, 1/4-20 x 3/4" HHCS FT Gr.5 Zinc	3
9	402005	Bumper	2
10	W-102	Washer, 1/4 Flat	2
11	B-172	Bolt, 1/4-20 x 1 HHCS FT Gr.5 Zinc	2
12	N-219	Nut, 1/4-20 Flange Nyloc Gr. A Clear Zinc	2
13	500220	Solenoid, Starter	1
14	N-102	Nut, 1/4-20 Whizlock Flange	2
15	900309	Cable Tie	2
16	500019	Switch, Brake SE	1
17	B-258	Bolt, M5-0.8 x 16 HHCS FT Gr.8.8, Clear Zinc	2
18	N-210	Nut, M5-0.8 Hex w/Star Washer Gr.5, Clear Zinc	2
19	402138.25	Bracket, Fender Inner RH Black	1
20	400984	Bracket, Reinforcement Black	1
21	402131.25	Bracket, Fender Inner LH Black	1
22	402139.25	Bracket, Crossmember Seat Black	1

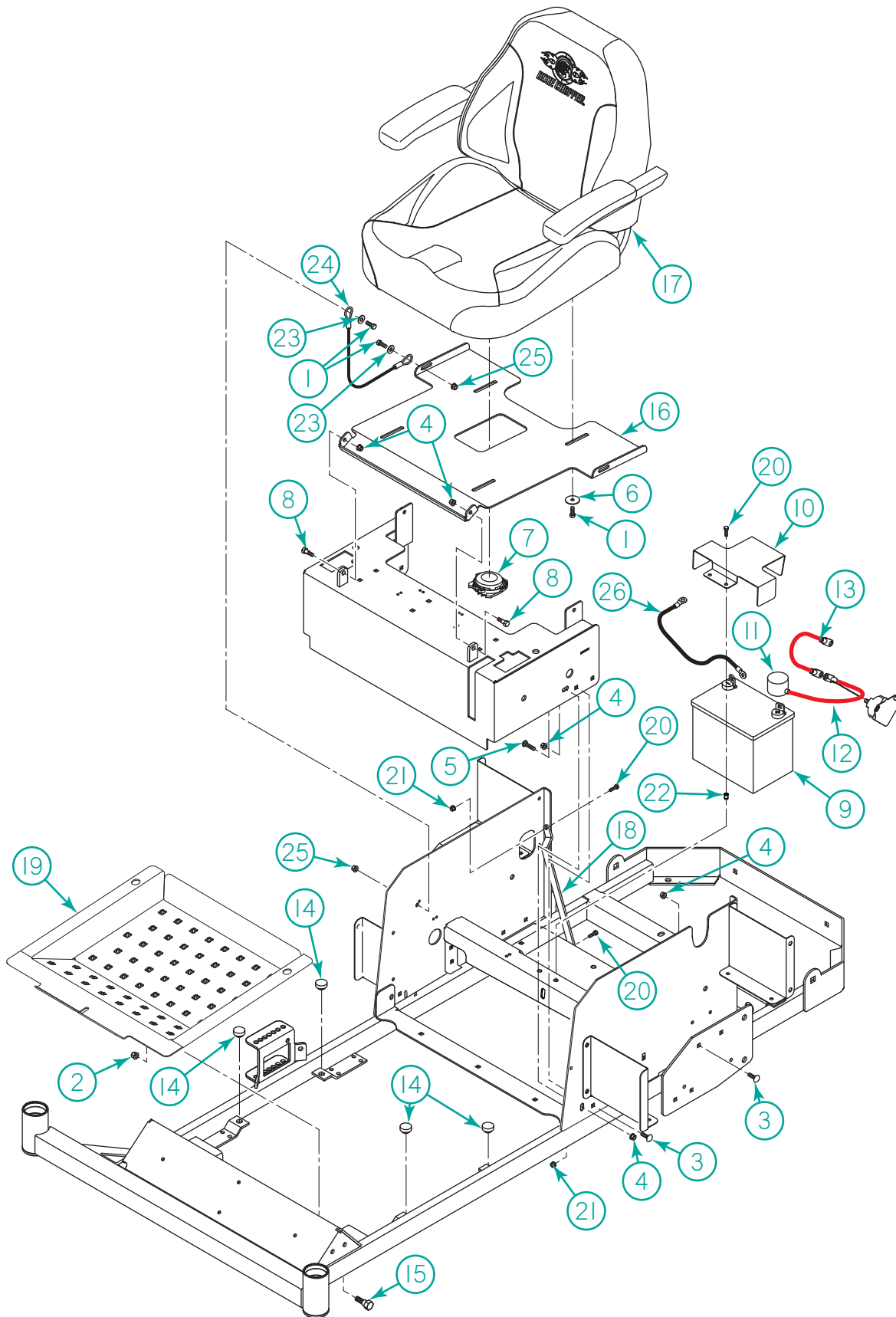
Body and Control Panel



Body and Control Panel

Item	Part No.	Description	Qty.
1	402138.25	Bracket, Fender Outer Shell RH	1
2	402133	Bracket, Panel Fender LH	1
3	402131.25	Bracket, Fender Outer Shell LH	1
4	500017	Switch, Ignition SE	1
5	500245	Meter, Hour/Tach/Volt Blue Dot	1
6	500243	Key, Ignition Switch	1
7	4130134	Plug, Panel	1
8	401809	ASM, Fuel Tank LH	1
9	500246	Harness, Wiring	1
9A	DUP-500186	Adapter, Engine Pig Tail (Briggs to Kohler/Kawasaki Engine)	1
10	B-209	Bolt, 1/4-20 x 3/4" SS Bolt	10
11	B-103	Bolt, 1/4-20 x 1/2" HHCS Stainless	4
12	N-101	Nut, 1/4-20 SS Whizlock Flange	6
13	W-153	Washer, 1/4 SS Flat	7
14	N-190	Nut, #8 Plastic Insert	8
15	S-118	Screw, #8 x 1/2" SS Round Hd Phlp Screw	8
16	N-102	Nut, 1/4-20 Whizlock Flange	2
17	402137	Bracket, Panel Fender Rh	1
18	4174684	Switch, PTO S.E.	1
19	401590	Assembly, Throttle, Full Detent	1
19A	902794	Knob	1
20	W-152	Washer, #10 Flat SS	2
21	B-203	Bolt, #10-24 x 3/4" HHCS FT SS	2
22	402143	Insert, Cup Holder	1
23	600072	Cable, Choke 63" Long	1
24	C-105	Clip, #10-24 Nut Clip f/Throttle	2
25	401833	Stop, Throttle	1
26	W-105	Washer, 3/8 Lock	1
27	N-184	Nut, 3/8-24 HHCS Gr. 2 Clear Zinc	1
28	400360	Fitting, Internal Tank Hose	1
29	600456	Grommet, Rollover Nitrile	1
30	DUP-600595	Valve, Remote Vent, 1/4 Barb	1
31	400885	Cap, Fuel Tank	1
32	4221120	Canister, Carbon (CA Models)	1
33	401513	Weld, Canister Mount, Black (CA Models)	1
34	B-104	Bolt, 5/16-18 x 3/4" Carriage (CA Models)	2
35	N-217	Nut, 5/16-18 Flange Nyloc Gr. A Clear Zinc (CA Models)	2

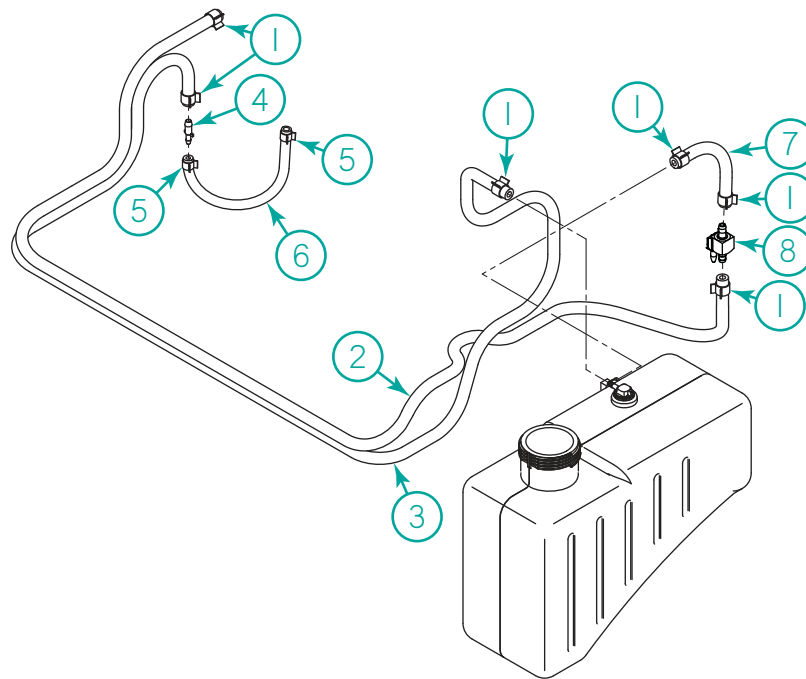
Body Cont.



Body Cont.

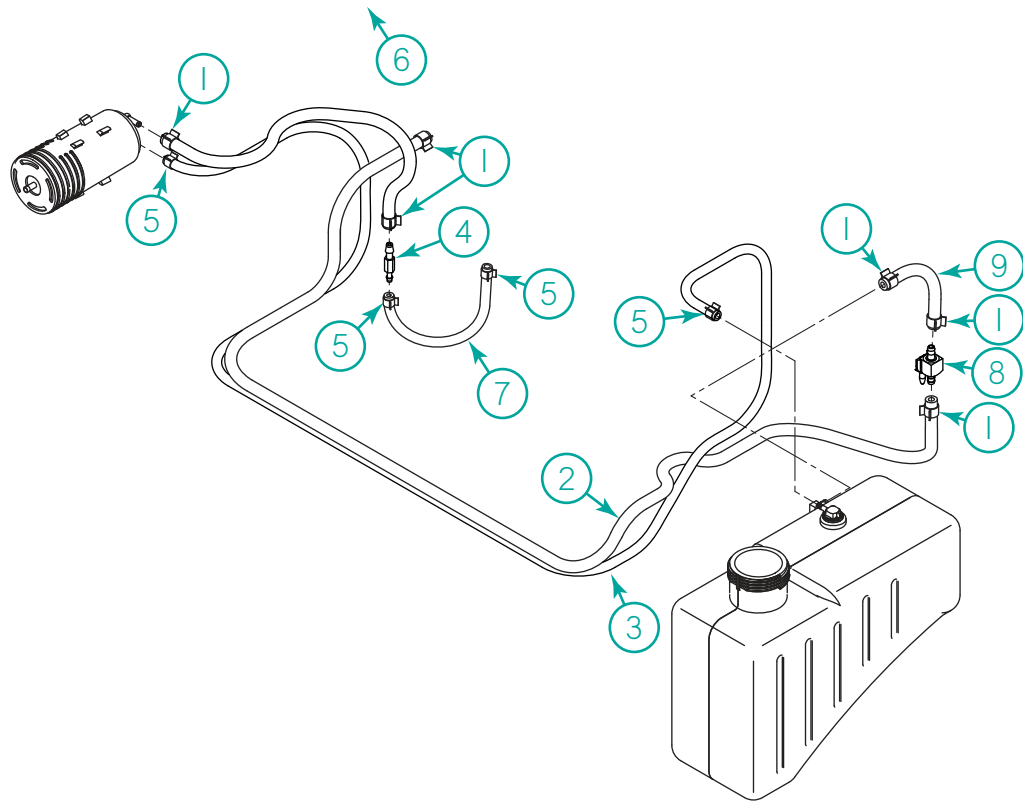
Item	Part No.	Description	Qty.
1	B-107	Bolt, 5/16-18 x 3/4" HHCS FT Gr.5 Zinc	2
2	N-216	Nut, 3/8-16 Flange Nyloc Gr. A Clear Zinc	2
3	B-104	Bolt, 5/16-18 x 3/4" Carriage Bolt	8
4	N-217	Nut, 5/16-18 Flange Nyloc Gr. A Clear Zinc	12
5	B-259	Bolt, 5/16-18 x 1" Carriage Bolt	2
6	W-118	Washer, 5/16 x 1-1/2" Fender	4
7	DUP-500120	Switch, OPS	1
8	B-366	Bolt, 3/8x5/16 x 5/16-18 x 1/2" Shoulder	2
9	20225	Battery, Standard (Small)	1
10	401118	Bracket, Battery Holder	1
11	500228	Boot, Battery Cable	1
12	500204	Cable, 13" Red (Includes Boot)	1
13	500069	Cable, 8" Red	1
14	900068	Pad, Rubber	4
15	B-364	Bolt, 1/2 x 3/8 x 3/8-16 x 5/8" HHCS Shoulder	2
16	DUP-401054	Bracket, Seat Pan Black	1
17	401963	Seat, w/ Arm Rests, w/o Sliders	1
18	401069	Bracket, Fender Strap Black	2
19	402142.25	Bracket, Floor Pan Black	1
20	B-102	Bolt, 1/4-20 x 3/4" HHCS FT Gr.5 Zinc	6
21	N-102	Nut, 1/4-20 Whizlock Flange	4
22	N-152S	Nutsert, 1/4-20 Flange Zinc (.027-.165)	2
23	W-113	Washer, 5/16 Flat	2
24	40218	Cable, Seat	1
25	N-103-W	Nut, 5/16-18 Whizlock Flange	2
26	20226-B	Cable, 12" Black	1
27	B-131	Bolt, 5/16-18 x 3/4" HHCS FT Gr.5 Zinc	4
28	W-163	Washer-M8 Lock	4

Fuel Hose Routing (49 State)



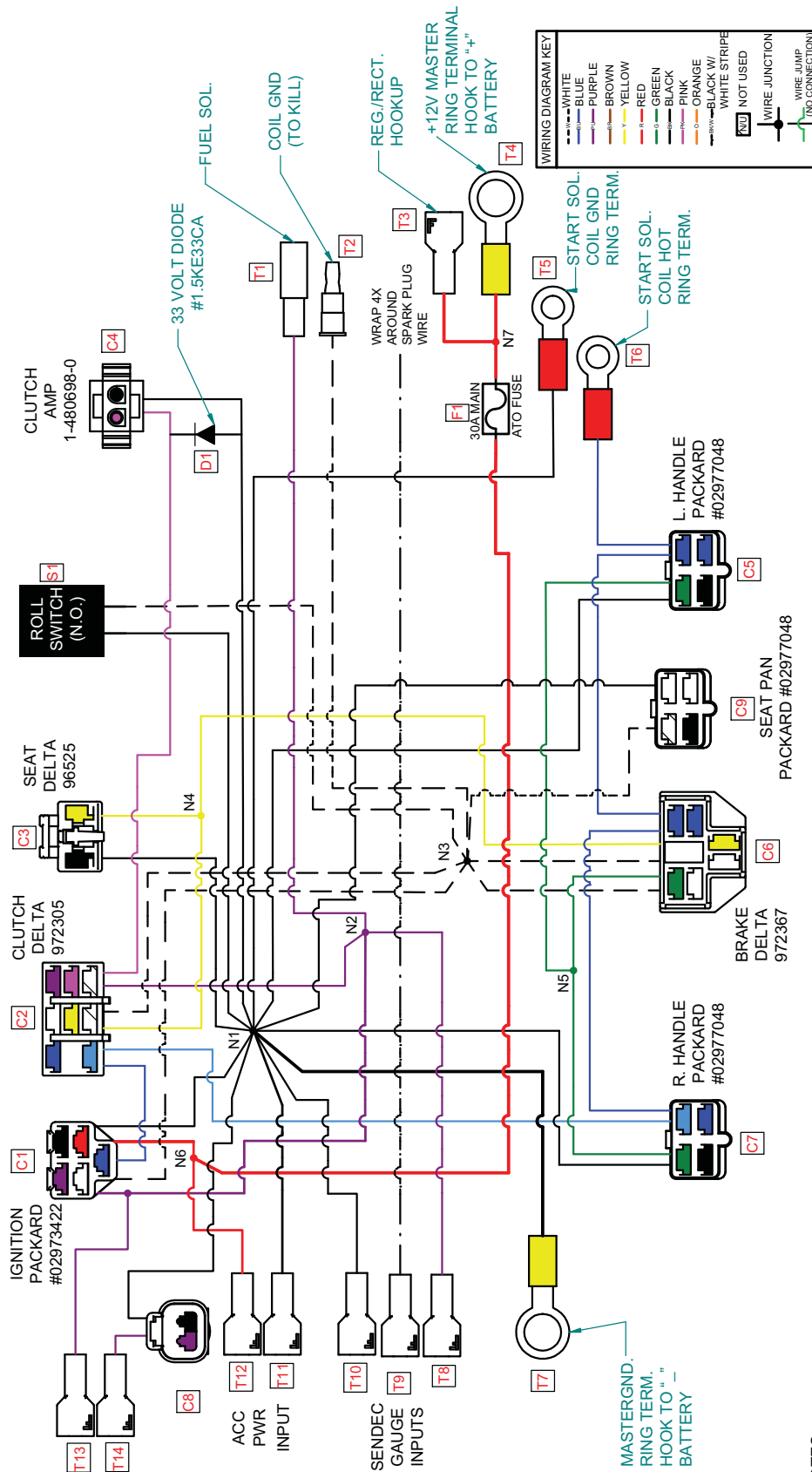
Item	Part No.	Description	Qty.
1	40213	Clamp, 1/4 Hose	4
2	600398	Hose, Gas Line 1/4" EPA 15 g/m ² /24h	/IN
3	600398	Hose, Gas Line 1/4" EPA 15 g/m ² /24h	/IN
4	902983	Fitting, 1/4 Hose to 3/16" Hose	1
5	C-125	Clamp, 3/16" Hose	2
6	600399	Hose, Gas Line 3/16" EPA 15g/m ² /24h	/in
7	600398	Hose, Gas Line 1/4" EPA 15 g/m ² /24h	/IN
8	401204	Valve-Ball In-Line Panel Mount	1

Fuel Hose Routing (CA Model)



Item	Part No.	Description	Qty.
1	40213	Clamp, 1/4 Hose	4
2	600398	Hose, Gas Line 1/4" EPA 15 g/m ² /24h	/IN
3	600399	Hose, Gas Line 3/16" EPA 15g/m ² /24h	/IN
4	600454	Valve, Anti-Backfire 1/4 x 3/16"	1
5	C-125	Clamp, 3/16" Hose	4
6	600398	Hose, Gas Line 1/4" EPA 15 g/m ² /24h	/IN
7	600399	Hose, Gas Line 3/16" EPA 15g/m ² /24h	/in
8	401204	Valve-Ball In-Line Panel Mount	1
9	600398	Hose, Gas Line 1/4" EPA 15 g/m ² /24h	/IN

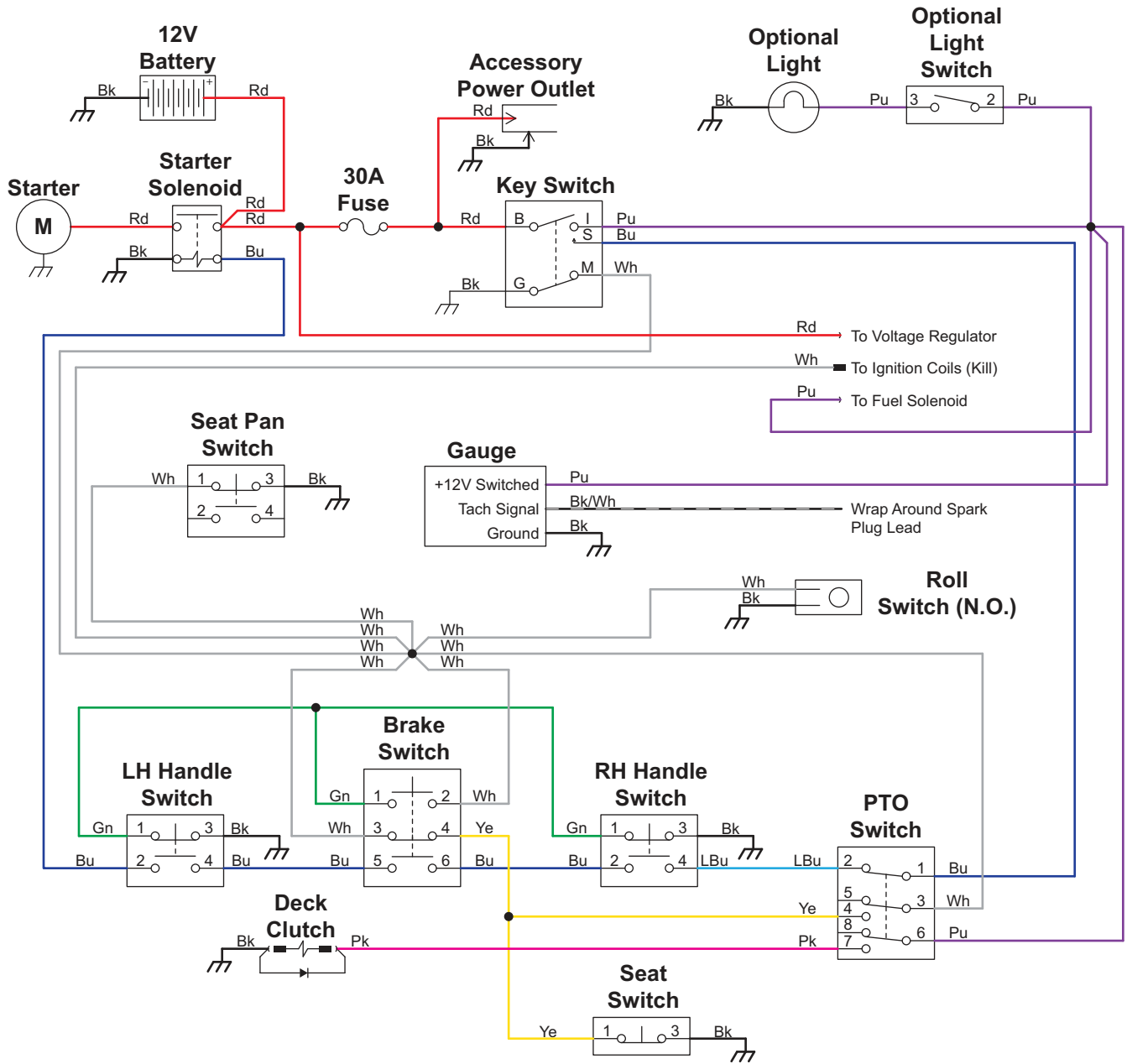
Wiring Diagram



NOTES:

- MAY USE EQUIVALENT FOR ALL CONNECTORS AND TERMINALS EXCEPT FOR C5, C7, AND C9 ON THIS MODEL
- MAY CONNECT NODES N3, N4, N5, N6, AND N7 IN ANY CONNECTOR OR TERMINAL BUT PLEASE WELD N1 AND N2 (ACCORDING TO YOUR PROCESS)

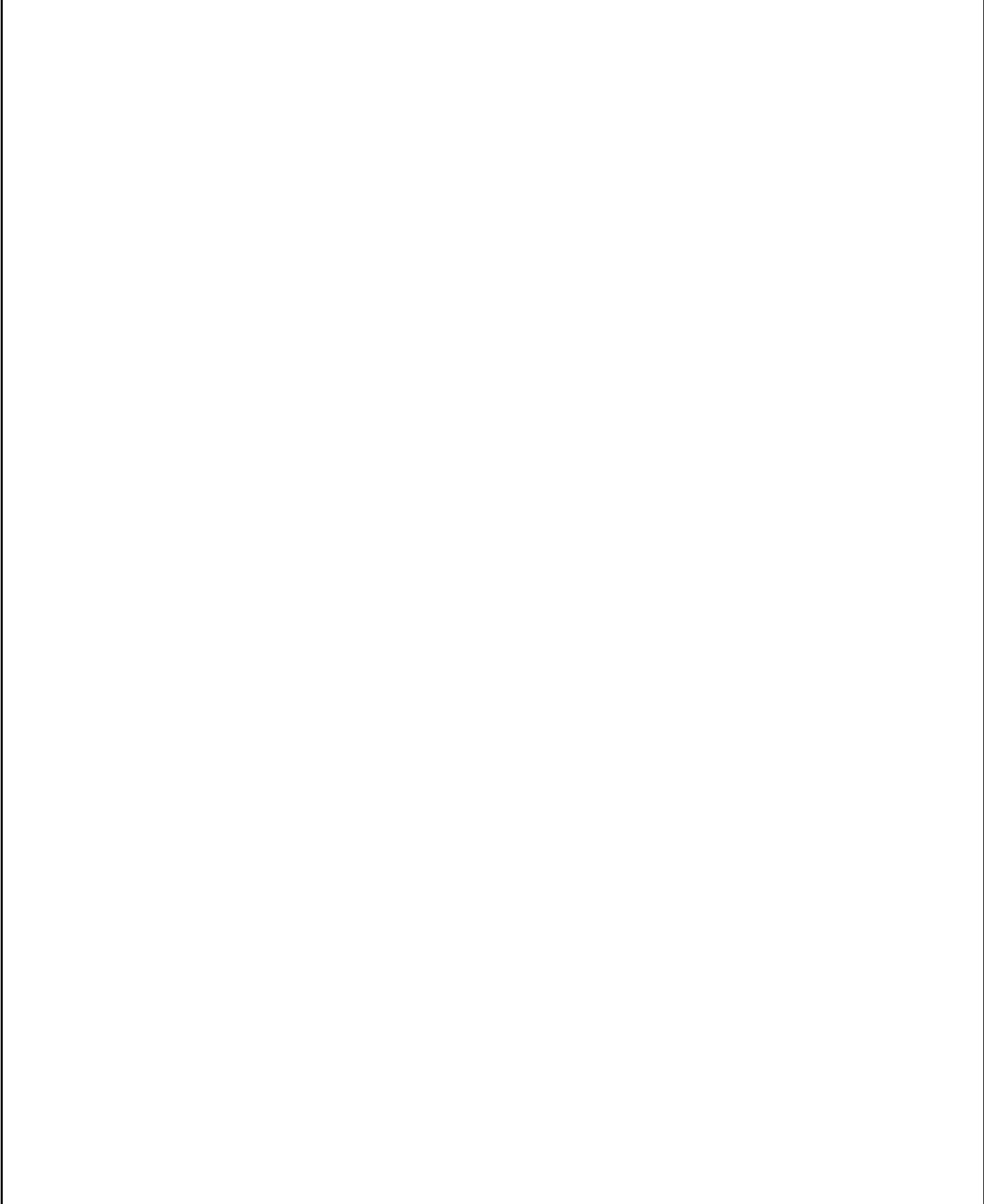
Electrical Schematic



General Bolt Torque Specifications

Bolt Size Inches	Coarse Thread /Inches	SAE 0-1-2 Low Carbon Steel	SAE Grd. 3 Medium Carbon Steel	SAE Grd. 5 Med. Carbon Heat T. Steel	SAE Grd. 6 Med. Carbon Treat Steel	SAE Grd. 7 Med. Carbon Alloy Steel	SAE 0-1-2 Med. Carbon Alloy Steel
1/4	20	6	9	10	12.5	13	14
5/16	18	12	17	19	24	25	29
3/8	16	20	30	33	43	44	47
7/16	14	32	47	54	69	71	78
1/2	13	47	69	78	106	110	119
9/16	12	69	103	114	150	154	169
5/8	11	96	145	154	209	215	230
3/4	10	155	234	257	350	360	380
7/8	9	206	372	382	550	570	600
1	8	310	551	587	825	700	840
1-1/8	7	480	794	872	1304	1325	1430
1-1/8	7	675	1105	1211	1815	1825	1975

To determine the torque for a fine thread bolt, increase the above coarse thread ratings by 9%.



Index

Numerics	301067	18	402142.25	30
101001	301068	18	402143	28
101016	301069	18	40218	30
101041.25	301083	16	4130134	28
101043.25	301084	12, 14	4174684	28
10206	301085	16	4221120	28
10207	301086	14	500017	28
10208	301087	12	500019	26
200545	301088	20, 22	500069	30
200557	301258	16	500130	24
200561	301692	6	500135	24
200562	302164	6	500144	20, 22
200563	302626	14	500204	30
200566	302635	14	500220	26
200568	302636	12	500228	30
200570.52	302637	12	500243	28
200572	302638	16	500245	28
200709	302639	16	500246	28
201029	400360	28	600030	8
201030	400466	26	600072	28
20224	400595	8	600398	31, 32
20225	400671	24	600399	31, 32
20226-B	400885	28	600422	20, 22
300324	400930	10	600436	20
300365	400984	26	600449	22
300502	400993	24	600451	22
300630	400999	24	600454	32
300631	401010	24	600456	28
300633	401016	24	600567	20
300797	401069	30	600568	20
300799	401070	24	67240	12, 14, 16
300818	401114	24	67258	6
300829	401118	30	67258-R	24
300832	401153	24	800553	3
300833	401204	31, 32	800593	3
300837	401410	10	800901	3
300839	401513	28	800936	3
300868	401590	28	900068	6, 30
300892	401809	28	900309	26
300908	401833	28	901509	20
300930	401902	24	902038	22
300933	401932	10	902629	6
300955	401936	24	902794	28
300979	401937	24	902983	31
300981	401963	30	97098	8
300995	401982	6	97171	10
300996	402005	26	B	
300997	40213	31, 32	B-102	26, 30
300999	402131.25	26, 28	B-103	28
301001	402133	28	B-104	10, 12, 14, 16, 24, 26, 28, 30
301003	402137	28	B-105	20, 22, 24
301047	402138.25	26, 28	B-107	30
301048	402139.25	26		

Index

B-108	6	DUP-401098	24	W-123	8
B-110	12, 14, 16	DUP-401194	24	W-125	6
B-122	10	DUP-401211	24	W-144	20, 22
B-124	8	DUP-500120	30	W-152	28
B-128	24	DUP-500186	28	W-153	6, 26, 28
B-131	24, 30	DUP-600595	28	W-158	20, 22
B-135	10, 12, 14, 16	DUP-800552	3	W-163	20, 22, 30
B-136	12, 14, 16	DUP-800904	3	W-201	18
B-137	12, 14, 16, 24	F			
B-140	8	F-100	10		
B-165	12, 14, 16	K			
B-172	8, 26	K-103	20, 22		
B-173	8	N			
B-176	8	N-101	26, 28		
B-190	12, 14, 16	N-102	12, 14, 16, 26, 28, 30		
B-203	28	N-103	20		
B-209	6, 26, 28	N-103-W	30		
B-216	20, 22	N-107	24		
B-248	24	N-108	8		
B-258	26	N-112	6, 8		
B-259	30	N-113	10		
B-261	8, 12, 14, 16	N-144	24		
B-278	12, 14, 16	N-152S	26, 30		
B-304	12, 14, 16	N-153	24		
B-313	6	N-156	10, 12, 14, 16		
B-317	20	N-176	24		
B-337	12, 14, 16	N-183	10		
B-349	18	N-184	28		
B-353	10	N-190	28		
B-364	6, 12, 14, 16, 30	N-210	26		
B-365	12, 14, 16	N-212	22		
B-366	24, 30	N-215	24		
B-374	12, 14, 16	N-216	6, 8, 10, 12, 14, 16, 30		
B-436	22	N-217	6, 8, 10, 12, 14, 16, 20, 22, 24, 26, 30		
C		N-218	10		
C-105	28	N-219	6, 8, 26		
C-113	8	N-225	24		
C-118	8	N-226	24		
C-125	31, 32	P			
C-134	6	P-112	24		
D		S			
DUP-101000	6	S-115	20		
DUP-101002	6	S-118	28		
DUP-301690	6	S-137	8		
DUP-400296	10	W			
DUP-400438	10	W-102	8, 24, 26		
DUP-401008	24	W-104	22, 24		
DUP-401021	24	W-105	28		
DUP-401022	24	W-106	6, 8, 12, 14, 16		
DUP-401032	24	W-113	20, 22, 30		
DUP-401054	30	W-118	30		
DUP-401057	24				
DUP-401095	24				



DIXIE CHOPPER
6302 E. County Road 100 N.
Coatesville, Indiana 46121
www.dixiechopper.com

Specifications and instructions subject to change without notice.

Dixie Chopper is a registered trademark of Jacobsen Professional Lawn Care Inc.
any and all use and/or reproductions are strictly prohibited.

Printed In USA